



**WOLVES V BURNLEY**  
SEAH STADIUM  
SUNDAY 24TH AUGUST 2025



TheFA Women's  
National League

£3



1975-2025

## CONTENTS:

1. Lily Simkin and Hannah Hampton
3. Dan McNamara
4. Jeff Shi
5. Matt Jackson
8. Match action
10. Special feature: Best Friends
14. The class of 25/26
16. Meet the Magnificent Seven
20. Roll of Honour
22. New Advisory Board
24. The Wolfpack Cup
25. Chair's (Painful) Update
26. Our opponents: Burnley
27. Statistics
28. Wendy's Wordsearch
29. Spot the Difference
30. Fixtures & Results

---

### PROGRAMME TEAM

Mike Capewell, Tony Leighton, James Orotayo, Paul Berry,  
Luke Turner, Jenny Wilkes, Synaxis Design Consultancy

**Printed by**  
Purcell Branding



**Good afternoon and welcome to the SEAH Stadium for our first home league game of the season against Burnley.**

This is a massive game which we have all been looking forward to ever since the fixtures were released, but at the same time, we know we couldn't have landed a more challenging start to kick off our home league schedule here at Telford.

Burnley boast a squad of outstanding players with a hugely successful manager in Matt Beard, and so much WSL experience, making them undoubtedly the clear favourites to win National League North this season.

That means it's up to the rest of us in the league to work as hard as we can to cause them problems, and that is exactly what we will be aiming to do – with our own outstanding players - during the 90-plus minutes this afternoon.

We have made a decent start from two tough opening fixtures, following up last weekend's win at Liverpool Feds with a late League Cup victory against Stoke, and I have huge confidence in the group we have assembled heading into a fresh and exciting new era.

With the players we have retained, and new signings brought in, I believe we now have the most talented squad at our disposal since I arrived at Wolves over seven-and-a-half years ago.

The squad also possesses a healthy blend of youth and experience, and, with so much strength in depth, I have told the girls that they will all have different roles to play during the season.

Whatever that role is from week to week, it will need to be delivered with the utmost positivity, because we need to have good and positive vibes around the dressing room to have the best chance of achieving what we want to achieve.

I have no doubts that will be the case. As well as good players, they are good people, and we are also benefitting from an improved infrastructure off the pitch which has the potential to bring about sustained and long term success.

For now, though, it's all about this afternoon. Our focus is on producing the sort of all-round level of performance, a real Wolves performance with both talent and tenacity, that gives us the best chance of coming away with a positive result.

To do that we will also need your help, and the support which you always provide with so much passion and enthusiasm here at the SEAH.

Let's see where that can take us!

**Dan McNamara**  
Manager





Over the summer, we have followed up on our commitment to ensure that Wolves Women has a stronger and more viable structure in place to build a more sustainable and competitive future for a vital part of our football family.

There is still more work to be done, but already we have strengthened the women's set-up across commercial, financial, marketing and sporting operations so that the club is better equipped for long-term success.

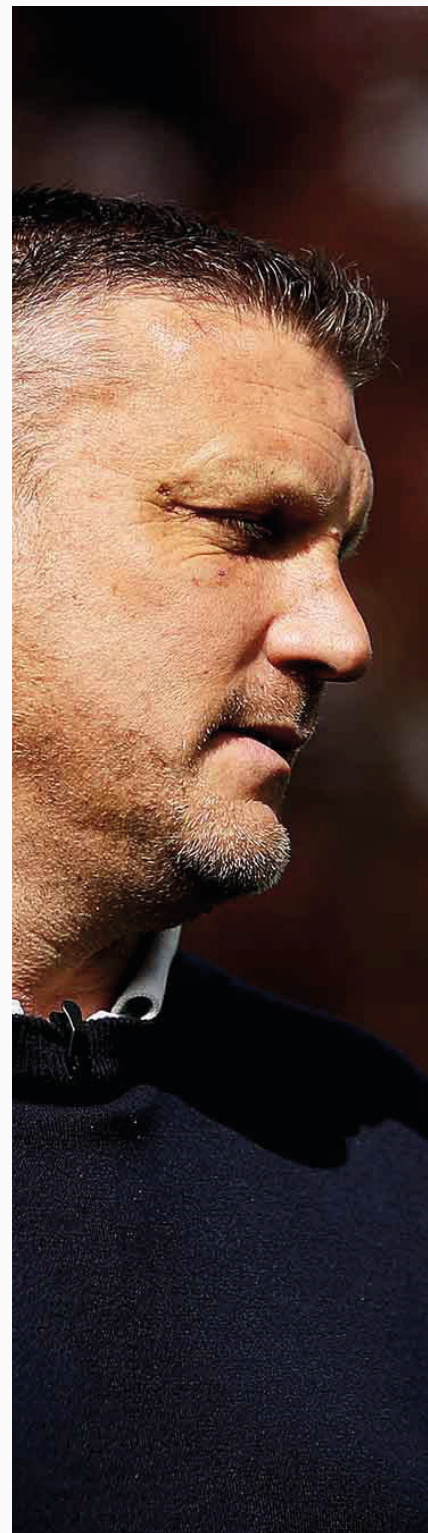
We have achieved this by introducing a positive mix of fresh impetus, alongside key figures with vast experience of Wolves Women, including a brand new advisory board to help drive growth and development off the pitch.

It has been an exciting summer with Dan McNamara bringing in some very talented, young and hungry new players, alongside providing contracts to existing members of the group, building a squad which has an excellent chance of being successful.

It feels like we are in a very good place and I am looking forward to being more involved this season, and meeting more regularly with Dan and the senior leadership team of players.

We start with a very important game against Burnley this afternoon. Thanks for your support, and let's all work together with the shared aims of a positive and exciting season.

**Jeff Shi**  
Executive Chairman



Today's first home league game of the season, following an excellent win at Liverpool Feds last weekend, feels like the start of a new era for everyone connected with Wolves Women, and hopefully a very exciting and ambitious one.

With the support of Jeff and increased backing across different sectors of the club, there are now very strong foundations in place which will allow the team to make a sustained push towards the higher levels of the game.

It is a privilege for me to be overseeing the Women and Girls section as part of my overall role at Wolves, and to be working with so many skilled and passionate people who are focused on developing and improving the set-up, on and off the pitch.

As a club, we are aiming to do things a little bit differently with the women's team, in terms of the pathway towards climbing up the leagues.

While some teams opt to go completely full-time within their women's section, which clearly has a lot of merit, a flexible hybrid model is one which really suits us here at Wolves, particularly given so many of our key players prefer to combine their football with jobs away from the game.

Going completely full-time would deny us the services of these players, and so this hybrid model of different contracts for players depending on their personal circumstances, is one which really suits us at the present time.

It has allowed Macca to build up a really strong and competitive squad during pre-season, importantly one which includes plenty of young and hungry talent who will be offered opportunities to impress, whilst also learning from their more experienced team-mates.

This blend of youth and experience should stand us in good stead not just this season but in the years to come, and we are excited to see what they will be able to achieve.

Enjoy the game.

**Matt Jackson**  
Director of Player Recruitment & Development





**PURCELL**  
BRANDING  
GRAPHICS / SIGNAGE / INTERIORS / EVENTS



MAKING YOUR BRAND  
**STAND OUT** FROM THE CROWD

hello@purcellbranding.co.uk @purcellbranding @purcellbranding

Thank you to today's  
Main Match Sponsor



**PURCELL**  
BRANDING  
GRAPHICS / SIGNAGE / INTERIORS / EVENTS

Find out more about match sponsorship packages  
for the 2025/26 season by emailing:  
**yungtran@wolves.co.uk**



17.08.2025 | 2pm

# EMPHATIC VICTORY IN SEASON OPENER: LIVERPOOL FEDS 0 WOLVES 4

## TEAM

Brooks,  
Harkin,  
Marshall (Johnson 70),  
Hughes (Williams 70),  
Quigley (Greengrass 60),  
Sims (Loydon 80),  
Anderson,  
Roberts,  
Jenner,  
Merrick,  
Worsey (Cross 60).

## Unused Subs

Thomas, MacPhail.





## SPECIAL FEATURE

by Tony Leighton

# BEST FRIENDS!

Watching England win the Women's Euro 2025 final with a dramatic penalty shoot-out victory over Spain was a nerve-wracking experience for all of us watching the game on TV.

So, imagine what it was like for Wolves midfielder Lily Simkin, watching from the stand at the St Jakob-Park stadium in Basel as her best friend Hannah Hampton was in the England goal aiming to thwart the Spanish spot-kick takers and help the Lionesses to glory.

"I was there with Hannah's mum and dad," explains Simkin. "So there was a lot of emotion between us and we got really anxious when Spain were on top.

"When it went into extra time I was thinking, 'let's take it to penalties and hopefully Hannah can be the hero again, like she was in the quarter-final shoot-out against Sweden.'

**"BETH MEAD MISSED OUR FIRST PENALTY, BUT THEN HANNAH SAVED TWO OUT OF THREE TO PUT US IN FRONT - AND WHEN CHLOE KELLY'S PENALTY HIT THE NET TO WIN THE GAME IT WENT CRAZY!"**

"I ended up a few rows down the stand as everybody around us was chanting and cheering, celebrating like mad, and it was still going on when Hannah walked up the stand to join us after the medal ceremony.



That was a very special moment for all of us, one that we'll never forget - what a day!"

What a day indeed, and what a friendship that Simkin and Hampton have after first meeting up when both were at Birmingham City.

Hampton had joined the club from Stoke City in 2016 while Simkin, three years younger, had come through her village team Great Wyrley's junior set-up before starting at Blues as part of their Regional Talent Club programme.

"As soon as we met, we just clicked," recalls Simkin. "Hannah lived very close to me as well. Her mum and dad and mine became friends, and now I see her parents as my second mum and dad and she's the same with my parents.

"When I started training with the first team at Birmingham, Hannah was the first to welcome me in and took me under her wing. She'd been very young herself when she broke into first team football so she understood the pressures.

"We're probably each other's closest friend now. I'm saved as 'Little Sister' on Hannah's 'phone and she's saved as 'Big Sister' on mine. She's always been there for me when I've needed her, and me for her when she's needed me."

The footballing journeys of the two 'besties' took different routes when Hampton moved first to Aston Villa and then, in 2023, to her current Chelsea, while Simkin left Blues in 2023 after some memorable moments with both club and country.

She made her senior team debut at 16 in a Women's Super League match away to Brighton & Hove Albion in the club's splendid Amex Stadium.

"I was sent on as sub and I thought 'wow, this is for real.' I can remember the ball went out one time and Hope Powell (Brighton manager at that time and ex-England Head Coach) gave me the ball and I was like, 'That's Hope Powell passing me the ball!' It was crazy!"





Not perhaps so crazy but another wonderful memory for the midfielder also came away from home - a long way from home - when playing for England's Under-17 team. "We played America twice in Florida," she remembers, "that was a great experience, I loved it."

It was three years after that trip that Simkin left Blues and, playing for Nottingham Forest in a pre-season friendly, suffered an ACL (anterior cruciate ligament) injury that sadly ruled her out for the entire 2023/24 season.

"That was a bad time for me," says Simkin. "It was four months before my rehab programme got going properly and I was 14 months out of action before signing for Wolves. And it was great in every way to join the club I've got such a connection with."

That connection is Simkin's father Darren, who played for Wolves in the 1990's and has been a major influence on his daughter's football journey.

"My dad is who my love of football came from," she says. "I don't know if without him I would have taken up the game. My early memories are of seeing him when he played with the likes of Mel Eves and Jody Craddock in the Wolves All-Stars veterans' team. I met them all, I'd be there watching with my little Wolves kit on. My dad being a footballer was quite cool."



The father-daughter Wolves connect was completed in February this year as Simkin junior, now aged 21, put pen to paper to the delight of manager Dan McNamara.

"Lily's a fantastic signing for the club," he said. "I've known of her qualities since she was a youth player and now is the right time for her and for us to bring her in."

It may have been the 'right time' but was not the first time that McNamara had tried to bring in Simkin, who reveals:

**"FROM WHEN I WAS YOUNG AT BLUES, MACCA HAD TRIED TO SIGN ME ON LOAN A NUMBER OF TIMES. BUT THIS WAS DEFINITELY THE RIGHT TIME FOR ME TO JOIN WOLVES."**

After just two training sessions following her signing, Simkin made her Wolves debut as a substitute in the big FA Cup tie against Manchester United, whose team included her former Birmingham team mates Rachel Williams and Aoife Mannion. Then she made a Player of the Match full debut against Sporting Khalsa in the National League. But then....

Devastatingly, on the March weekend of the National League visit to Hull City, the ACL curse struck again to leave Simkin facing another long lay-off.

"I felt my knee in training on the Friday," she says. "It just felt a bit weird. It didn't feel right when we travelled up to Hull on the Saturday, but I said I'll see how it goes and so I started the game on the Sunday.

"But every time I started to sprint it just gave way and I came off after 60 minutes because I couldn't run. Then it swelled up and I ended up having a scan that showed it (the ACL) was 65 per cent re-torn."



The knee affected is the same one that suffered the first ACL injury, which brought immediate concerns. But Simkin says: "I'm in a positive place. Some days are better than others, you get hit with frustration at times, but I'm four months post-surgery now and it's going really well.

"The rehab is going a lot faster and it's more positive than the last time I had the problem. I'm confident I'll get back to normal and it won't be an issue in the future - and I'm determined to be back playing at some point this season."

Simkin will undoubtedly spend most of the season watching from the sidelines, but she is backing her team mates to produce a successful campaign. "We've made some excellent signings," she says, "and I feel we've built a really strong team.



**"THINGS ARE CLICKING AND EVERYBODY IS EXCITED FOR THE SEASON AND WHAT WE MIGHT ACHIEVE. WE WANT PROMOTION, THAT'S THE AIM - WE ARE BEING OPEN ABOUT THAT, WE'RE NOT SHYING AWAY FROM IT."**



# Women

2025/26



A. Brooks



L. Harkin



A. Morphet



G. Marshall



L. Simkin



A. Grey



M. Will



J. Cross



A. Loydon



A. Hughes



C. Greengrass



B. Thomas



M. Macphail



R. Quigley



K. Johnson



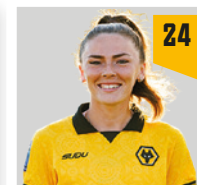
A. Sims



B. Anderson



B. Roberts



C. Williams



A. Hiscox



A. Jenner



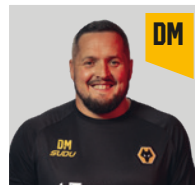
B. Merrick



S. Owen



L. Worsey



D. McNamara

**Thank you for your support for us all, it really means a lot!**



## A SUMMER OF CHANGE:

# MEET THE MAGNIFICENT SEVEN!

**It has been a summer of change for the Wolves Women playing staff, with boss Dan McNamara shuffling his pack ahead of the new campaign.**

There were several departures, with both Destiney Toussaint and Emma Cross announcing their retirements, and Tammi George heading to WSL2 to join Sheffield United.

There were a number of exciting new signings coming in the other direction, alongside important new or renewed contracts for the likes of Anna Morphet, Katie Johnson, Abbi Jenner, Beth Roberts and Abi Loydon.

In terms of the new faces, McNamara is confident that the assembled squad, with its blend of youth and experience, should leave Wolves ready to embark on an 'exciting three or four years'.

Here is a whistlestop tour of the new signings, thanks to the words of the gaffer.



### AMY SIMS

**Midfielder**

Signed from Nottingham Forest

"I've known Amy for a few years, and she used to cause us all kinds of problems. She's an excellent, all-rounded player, and she's got so much ability, energy, aggression and she's technically really clean. She's a real team player with a great attitude and has an ambition to play higher in the football pyramid, so I'm delighted to get it done and hopefully we can go on a good journey together over next few years."



### GEORGIA MARSHALL

**Defender**

Signed from Burnley

"Georgia is tenacious, she can play, she knows what it takes to win, and, even at only 22-years-old, she'll add really good experience in our defence. She's worn the captain's armband at Huddersfield and Burnley, so she'll also bring leadership qualities to the group. Georgia's been there and done it, and led some good teams within the National League, so she's a really exciting signing for us."

### ANNA GREY

**Winger**

Signed from Burnley

"I think Anna will quickly become a fan favourite as she's direct, she knows what she wants, she's got great delivery, a great left foot, so I'm really excited to see her on the pitch. I'm sure she'll embed herself into the group really well. Anna is someone that I've been in awe of for the last couple of years, and has been up there among the finest wingers in the National League."





## LYNDSEY HARKIN

Defender

Signed from Nottingham Forest

"Lyndsey's leadership qualities as an individual, and the way she holds herself and the standards that she drives, it was a simple decision for us to bring her in and add real firepower to our back line. With the leadership qualities and her experiences over the last few years, that will certainly help the group as we felt it was really important to bring someone in who can really lead us forward."



## LOUANNE WORSEY

Forward

Signed from Birmingham City

"Over the last few years, I've always been a big admirer of Louanne – for someone of such a young age, she's got very good experience. She's aggressive, technically superb and has real ability to win a game on her own. She can come up with those moments of brilliance, so I'm very excited to get her in. It's a statement of where we're trying to go as a club, a 20-year-old with so much talent and experience, with a massive future ahead of her."



## ALEX BROOKS

Goalkeeper

Signed from Blackburn Rovers

"Alex has been operating in the top two levels of the game, with Blackburn Rovers and previously with Birmingham City, so she'll bring not only the quality with regards to goalkeeping prowess, but also the know-how in big games as she's been involved in plenty of those over the last few years. Alex was one of the first people we went after over the summer and it's felt like a long wait, but we're delighted to finally get her over the line – but sometimes you have to wait for the big players."



## CHLOE WILLIAMS

Midfielder

Signed from Blackburn Rovers

"Chloe is the epitome of what we have been trying to do as a football club during my time as manager, so I'm delighted we've been able to bring her home to Wolves. Technically, she's a really gifted central player. She plays in the 10, she can play as a nine, she comes up with those little tricky passes, those little combinations on the edge of the box. We're looking forward to seeing how she's developed in the last six years, and we're excited to have her back in Old Gold."







# WOLVES WOMEN

— 1975 **50** 2025 —

## 50 FOR 50 ROLL OF HONOUR

To mark Wolves Women's 50th anniversary in 2025, we honour the first 50 fans to purchase a season ticket for the 2025/26 campaign:

Jane Andrews  
 Nicolas Andrews-Gauvain  
 Iyla Andrews-Gauvain  
 Christophe Andrews-Gauvain  
 Matthew Bagnall  
 Charlotte Maull  
 Daisy Bleach  
 John Bleach  
 Gary Courtman  
 Lucy Courtman  
 Maggie Courtman  
 Quinn Courtman  
 Kevern Cubitt  
 Jessica Deakin  
 Marc Deakin  
 Kiran Dehl  
 Kevin Eccleston  
 Matthew Francis  
 Isobelle Gough  
 Simon Gough  
 Robert Hopton  
 Michelle Hunt  
 Thomas John Blewitt  
 Adam Lewis  
 Olivia Maddocks Hopton

Gareth Mason  
 Stephen Mason  
 Ella Oldcorn  
 Simon Oldcorn  
 George Pitt  
 Martin Pitt  
 Poppy Pitt  
 Robyn Pitt  
 Valerie Preece  
 Mary Pritchard  
 Ross Rowe  
 Catherine Sims  
 Charlie Sims  
 Holly Sims  
 Vicki Slater  
 Lee Smith  
 Benjamin Walters  
 Daniel Walters  
 Emily Walters  
 Hayley Walters  
 John Walters  
 Sarah Walters  
 Sam Warrington  
 Liberty Whittingham  
 Stephen Whittingham





## NEW ADVISORY BOARD TO SUPPORT CLUB STRUCTURE

**Wolves Women will benefit this season from a brand new advisory board, made up of a group of highly respected figures who will help drive growth and development off the pitch.**

The board, which will sit independently from the club, will be dedicated to supporting the long-term strategy, sustainability and growth of Wolves Women's first team and female football pathway from the age of eight upwards.

Jenny Wilkes, Wolves Women chair since 1999 and long-term ambassador for the club, chairs the new board, and will work closely with chairman Jeff Shi and the club's senior leadership team.

Joining Wilkes is Anna Price, the club's highest ever appearance maker, who represented Wolves for 20 years, captaining the first team until her retirement last summer, and former defender Claire Hakeman, who played more than 200 games for the team and now works within the club's academy and women's operational department.

Completing the advisory board is Sky Sports presenter, media personality and Wolves fan Lynsey Hooper, and Caren Davies, a senior head of communications at the BBC and Wolves Foundation trustee, who hails from Wolverhampton.

**The board has already made some powerful strides since being appointed in working together to help develop a strategy to support the growth of the team commercially and operationally.**

Wilkes said: "The new board marks a pivotal moment for Wolves Women. We will work hand-in-hand with the club to bring expertise and insight across all areas, with a focus on growth, sustainability and ensuring there is a long-term infrastructure to sustain a girls' talent pathway from the age of eight and a strategy for the club to progress in the women's leagues."

Boss Dan McNamara was pleased to see the emergence of the advisory board is another strand of support for the overall women's set-up.

"You need good people supporting the whole structure, and we'll have that with that board," he said.

"They're going to be making some key decisions and supporting logistical operations moving forward.

"They're being tasked with looking at the commercial and marketing side, and we can really push on and start to generate some of our own income, which will only benefit the programme going forward."





WOLVES FOOTBALL DEVELOPMENT

Wolves Football Development & Wolves Women Present...

# THE WOLFPACK CUP

Sunday 24th August 2025

At SEAH Stadium, 10am-1pm

Thanks to the following six teams who took part in the Wolf Pack Cup before kick off today, a five-a-side competition for children in School Year three or under:

<b>Bridgnorth Spartans</b>	<b>NC United Silvers</b>
<b>Wednesfield Hulks FC</b>	<b>DMC Dortmund</b>
<b>Penkridge Juniors Lions</b>	<b>Hollywood Tigers</b>

We hope you enjoyed the experience. Look out for the winners on the pitch at half time!



## CHAIR'S (PAINFUL) UPDATE

Well, this is certainly the strangest and most emotional start to a football season I've ever had.

Visiting my partner Pete in hospital after his prostate cancer op, he got out of bed and fainted, I instinctively tried to catch him, I broke his fall - and he broke my leg!

No weight-bearing for me, no bending, lifting, or driving for Pete. Frustrating times.

Unfortunately we won't be supporting from the sidelines for a while, but we are most definitely there in spirit.

**Jenny Wilkes**

Chair, Wolves Women



Burnley Football Club's women's team was initially established as Burnley FC Girls and Ladies in 1995.

Originally playing in the Lancashire League, the team later moved to the North West Women's Regional League. At the end of the 2016/17 season, the management and operation of the team was transferred to the Club's charitable arm, Burnley FC in the Community.

The transition paid off immediately as, in 2017/18, Burnley won three preliminary round fixtures against Fleetwood Town, Merseyrail Bootle and Wigan Athletic to qualify for the FA Cup 1st round proper for the first time in their history.

Promotion to the FA Women's National League Division One North followed, as did a name change to Burnley Women.

The team's growth continued into 2018/19, with Matt Bee's side securing back-to-back promotions to the Northern Premier Division.

After consolidation in the third tier and several seasons impacted by COVID-19, new Burnley Chairman Alan Pace announced in February 2021 that the team would be integrated into the running of the Club.

That summer saw the Clarets become the first team to live stream matches on TikTok and, in April 2023, the team took to the Turf Moor pitch for the first time ever in a 2-1 victory over Liverpool Feds.

Under Head Coach Rebecca Sawiuk the team earned its highest ever third-tier finish of 2nd in 2023/24.

The squad then had a refresh over the summer with 12 players joining from Championship level or above.

Interim Head Coach Louise Roberts was appointed in March 2025 and her second match in charge saw the Clarets win the Lancashire FA Senior Cup for a third year running with a 4-1 victory over Chorley.

This summer saw the women's team take the next big step in its journey, transitioning to a full-time, professional model. Former Women's Super League winning manager Matt Beard was named manager in June 2025, bringing a wealth of experience from his time in charge of Liverpool.

There have been a plethora of additions to the playing squad too, ahead of what should be an exciting 2025/26 Northern Premier Division of the Women's National League season.

## LEAGUE TABLE 2025/26

Pos	Team	P	HOME					AWAY					TOTAL					GD	PTS
			W	D	L	F	A	W	D	L	F	A	W	D	L	F	A		
1	Rugby Borough	1	1	0	0	6	0	0	0	0	0	0	1	0	0	6	0	6	3
2	Burnley	1	1	0	0	5	0	0	0	0	0	0	1	0	0	5	0	5	3
3	<b>Wolves</b>	1	0	0	0	0	0	1	0	0	4	0	1	0	0	4	0	4	3
4	Stoke City	1	1	0	0	3	1	0	0	0	0	0	1	0	0	3	1	2	3
5	Hull City	1	1	0	0	1	0	0	0	0	0	0	1	0	0	1	0	1	3
6	Loughborough Lightning	1	0	1	0	1	1	0	0	0	0	0	0	1	0	1	1	0	1
7	West Bromwich Albion	1	0	0	0	0	0	0	1	0	1	1	0	1	0	1	1	0	1
8	Halifax	1	0	0	0	0	0	0	0	1	0	1	0	0	1	0	1	-1	0
9	Sporting Khalsa	1	0	0	0	0	0	0	0	1	1	3	0	0	1	1	3	-2	0
10	Liverpool Feds	1	0	0	1	0	4	0	0	0	0	0	0	0	1	0	4	-4	0
11	Middlesbrough	1	0	0	0	0	0	0	0	1	0	5	0	0	1	0	5	-5	0
12	Derby County	1	0	0	0	0	0	0	0	1	0	6	0	0	1	0	6	-6	0

## PLAYER STATS 2025/26

#	Name	League		WFA Cup		Lge Cup		BCC		2025/26		Wolves Total	
		apps	gls	apps	gls	apps	gls	apps	gls	apps	gls	apps	gls
1	Alex Brooks	1	0			1	0			2	0	2	0
2	Lyndsey Harkin	1	0			0 + 1	0			1 + 1	0	2	0
3	Anna Morphet											171	54
5	Georgia Marshall	1	0			1	0			2	0	2	0
6	Lily Simkin											5	0
7	Anna Grey					0 + 1	0			0 + 1	0	1	0
8	Merrick Will											23	1
9	Jade Cross	0 + 1	0			1	0			1 + 1	0	298	175
10	Abi Loydon	0 + 1	0			1	0			1 + 1	0	28	3
11	Amber Hughes	1	1			0 + 1	1			1 + 1	2	107	95
12	Charlotte Greengrass	0 + 1	0			1	1			1 + 1	1	34	33
13	Bec Thomas											133	0
14	Martha MacPhail											5	0
16	Racheal Quigley	1	0			1	0			2	0	20	9
17	Katie Johnson	0 + 1	0			1	0			1 + 1	0	102	9
18	Amy Sims	1	1			0 + 1	0			1 + 1	1	2	1
19	Becky Anderson	1	0			1	0			2	0	32	2
22	Beth Roberts	1	0			1	0			2	0	75	5
24	Chloe Williams	0 + 1	0			1	0			1 + 1	0	36	6
25	Amelia Hiscox											10	0
27	Abbi Jenner	1	0							1	0	30	2
28	Beth Merrick	1	1			1	0			2	1	133	51
31	Skye Owen											4	0
36	Louanne Worsey	1	1			0 + 1	0			1 + 1	1	2	1
39	Sophie Woodward											1	0

All stats correct at time of going to print.



# Wendy's Wordsearch...

Can you help  
Wendy solves  
these puzzles?  
You could colour  
her in too!



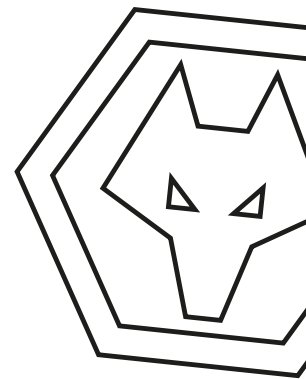
Can you find our opposition teams hiding in this letter grid?

RUGBY | BURNLEY | STOKE | HULL | LOUGHBOROUGH | WEST BROMWICH  
HALIFAX | KHALSA | LIVERPOOL | MIDDLESBROUGH | DERBY

## SPOT THE DIFFERENCE!



Can you circle 5 differences in the images above?





<div></div> FAWNL	Name	1st sub	TEAM	Home fixture	+	Own goal
<div></div> Adobe WFA Cup	Name	2nd sub	Team	Away fixture	●	Yellow card
<div></div> League Cup	Name	3rd sub	#	Goal scored	●	Red card
<div></div> B'ham Challenge Cup	Name	4th sub	I	Penalty scored		
	Name	5th sub				

DATE OPPOSITION						RES/KO	POS	ATT	REFEREE											SUBSTITUTES					
AUGUST																									
17	Liverpool Feds	W 4-0	3	256	A Kennedy	Brooks	Harkin	Roberts	Marshall	Jenner	Sims 1	Anderson	Worsey 1	Merrick 1	Hughes 1	Quigley	Greengrass	J Cross	Williams	Johnson	Loydon	Thomas MacPhail			
20	STOKE CITY	W 2-1	-	372	G Filipaok	Brooks	Johnson	Roberts	Marshall	Loydon	Anderson	Cross	Williams	Merrick	Greengrass 1	Quigley		Harkin	Sims	Hughes 1	Worsey	Grey	Thomas Hiscax		
24	BURNLEY																								
31	Rugby Borough																								
SEPTEMBER																									
7	MANCHESTER UNITED ACADEMY																								
14	MIDDLESBROUGH																								
21	Hull City																								
28	Wythenshawe																								
OCTOBER																									
5	STOKE CITY																								
12	West Bromwich Albion																								
29	SPORTING KHALSA																								
NOVEMBER																									
2	Halifax																								
16	LOUGHBOROUGH LIGHTNING																								
30	Derby County																								
DECEMBER																									
7	LIVERPOOL FEDS																								
JANUARY																									
4	Burnley																								
25	Middlesbrough																								
FEBRUARY																									
8	DERBY COUNTY																								
22	Loughborough Lightning																								
29	WEST BROMWICH ALBION																								
MARCH																									
8	DERBY COUNTY																								
22	Loughborough Lightning																								
29	WEST BROMWICH ALBION																								
APRIL																									
12	Stoke City																								
26	HALIFAX																								

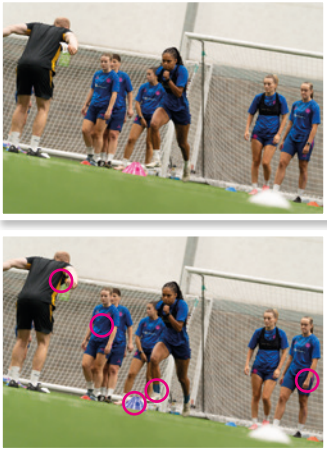
## Answers...

B	W	E	N	O	S	K	H	A	L	S	A	O	L
U	A	T	O	I	C	I	R	T	A	P	O	O	O
R	O	W	O	S	W	Y	E	I	J	A	N	A	U
N	T	M	D	P	R	A	I	E	E	Y	R	S	G
L	M	I	D	D	L	E	S	B	R	O	U	G	H
E	T	K	F	E	E	R	E	S	S	A	A	A	B
Y	O	O	Y	W	S	U	M	S	E	K	R	A	O
W	E	S	T	B	R	O	M	W	I	C	H	N	R
E	E	E	U	T	J	B	S	E	S	A	A	H	O
K	L	Y	S	D	R	U	G	B	Y	S	L	E	U
O	L	S	P	S	D	R	L	Y	A	S	I	D	G
T	D	E	R	B	Y	Y	R	O	D	I	F	Y	H
S	L	I	V	E	R	P	O	O	L	A	A	T	S
R	W	H	U	L	L	W	M	E	S	R	X	O	U



Answers...

B	W	E	N	O	S	K	H	A	L	S	A	O	L
U	A	T	O	I	C	I	R	T	A	P	O	O	O
R	O	W	O	S	W	Y	E	I	J	A	N	A	U
N	T	M	D	P	R	A	I	E	E	Y	R	S	G
L	M	I	D	D	L	E	S	B	R	O	U	G	H
E	T	K	F	E	E	R	E	S	S	A	A	A	B
Y	O	O	Y	W	S	U	M	S	E	K	R	A	O
W	E	S	T	B	R	O	M	W	I	C	H	N	R
E	E	E	U	T	J	B	S	E	S	A	A	H	O
K	L	Y	S	D	R	U	G	B	Y	S	L	E	U
O	L	S	P	S	D	R	L	Y	A	S	I	D	G
T	D	E	R	B	Y	Y	R	O	D	I	F	Y	H
S	L	I	V	E	R	P	O	O	L	A	A	T	S
R	W	H	U	L	L	W	M	E	S	R	X	O	U



Scan here for fixtures

Fixtures correct at time of going to print.

Tickets:

Match to match tickets for Wolves Women’s home games at the SEAH Stadium are now available from Wolves’ Ticketing site – [eticketing.co.uk/wolves](https://www.eticketing.co.uk/wolves).

If purchased in advance, tickets are priced at £5 for adults, over 65s and Under-21s, or £3 for juniors. If purchased on the day, prices rise to £8 for adults, over 65s and Under-21s, and £5 for juniors.



Scan here to buy tickets





SEAH STADIUM | SUNDAY 24TH AUGUST 2025

### WOLVES

1	Alex Brooks	<input type="checkbox"/>
2	Lyndsey Harkin	<input type="checkbox"/>
3	Anna Morphet	<input type="checkbox"/>
5	Georgia Marshall	<input type="checkbox"/>
6	Lily Simkin	<input type="checkbox"/>
7	Anna Grey	<input type="checkbox"/>
8	Merrick Will	<input type="checkbox"/>
9	Jade Cross	<input type="checkbox"/>
10	Abi Loydon	<input type="checkbox"/>
11	Amber Hughes	<input type="checkbox"/>
12	Charlotte Greengrass	<input type="checkbox"/>
13	Bec Thomas	<input type="checkbox"/>
14	Martha MacPhail	<input type="checkbox"/>
16	Racheal Quigley	<input type="checkbox"/>
17	Katie Johnson	<input type="checkbox"/>
18	Amy Sims	<input type="checkbox"/>
19	Becky Anderson	<input type="checkbox"/>
22	Beth Roberts	<input type="checkbox"/>
24	Chloe Williams	<input type="checkbox"/>
25	Amelia Hiscox	<input type="checkbox"/>
27	Abbi Jenner	<input type="checkbox"/>
28	Beth Merrick	<input type="checkbox"/>
31	Skye Owen	<input type="checkbox"/>
36	Louanne Worsey	<input type="checkbox"/>
39	Sophie Woodward	<input type="checkbox"/>

### BURNLEY

1	Eva Spencer	<input type="checkbox"/>
2	Charley Docherty	<input type="checkbox"/>
3	Emma Siddall	<input type="checkbox"/>
4	Brenna McPartlan	<input type="checkbox"/>
6	Jasmine Matthews	<input type="checkbox"/>
7	Heidi Logan	<input type="checkbox"/>
8	Emma Doyle	<input type="checkbox"/>
9	Claudia Walker	<input type="checkbox"/>
10	Millie Ravening	<input type="checkbox"/>
11	Danielle Maxwell	<input type="checkbox"/>
12	Maddie Robinson	<input type="checkbox"/>
13	Jade Richards	<input type="checkbox"/>
14	Mel Lawley	<input type="checkbox"/>
15	Helen Seed	<input type="checkbox"/>
16	Deirdre Bradley	<input type="checkbox"/>
17	Millie Chandarana	<input type="checkbox"/>
18	Louise McDaniel	<input type="checkbox"/>
19	Charlie Chadwick	<input type="checkbox"/>
20	Yana Daniëls	<input type="checkbox"/>
21	Brooke Cairns	<input type="checkbox"/>
22	Alethea Paul	<input type="checkbox"/>
23	Naomi Hartley	<input type="checkbox"/>
24	Tilly Wilkes	<input type="checkbox"/>
25	Aimee Kelly	<input type="checkbox"/>
27	Naoisha McAloon	<input type="checkbox"/>
28	Kirstie Levell	<input type="checkbox"/>
30	Abbey-Leigh Stringer	<input type="checkbox"/>



WFA Women's  
National League

### MATCH OFFICIALS

Referee: Chad Roberts | Assistant referees: Chloe Taylor, Kyle Mowbray

### NEXT UP AT SEAH STADIUM

Manchester United Academy  
Sunday 7th September 2024, 2.00pm | Women's National League Cup

DEBET



SUDU

Reconomy

