

# 300

APPEARANCES





# SPEND LESS

on your home energy bills



VISIT



COMPARE



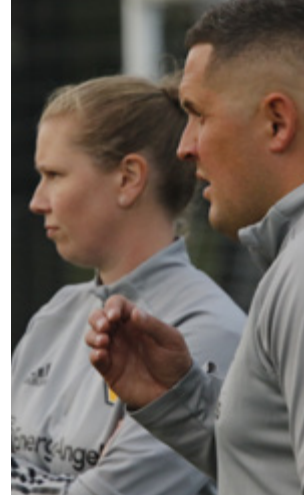
SWITCH

Our simple and free Ofgem accredited service is available to all households.



Average savings of £400\* per year  
[energyangels.co.uk](http://energyangels.co.uk)

\*Refer to website for details



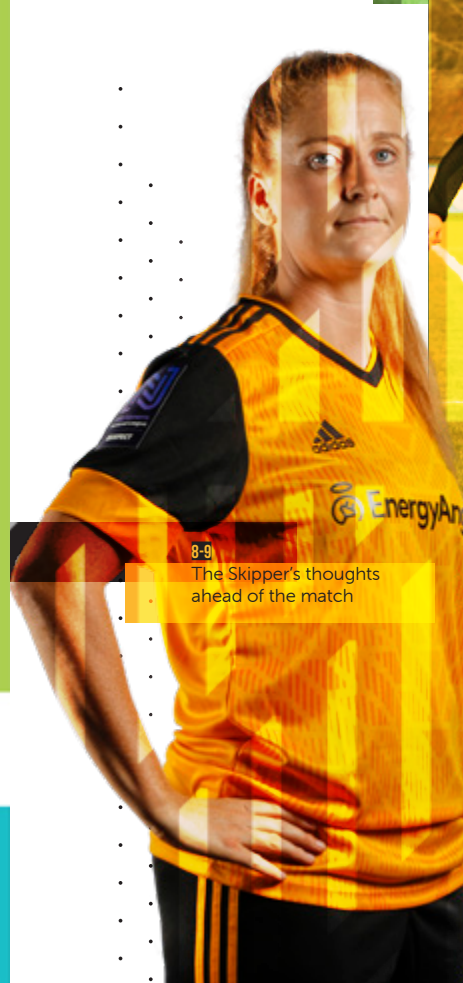
Macca's notes



24-27 We take a look at our visitors today



34 Action from the season that was 2020/21



8-9 The Skipper's thoughts ahead of the match

## INSIDE

- 6-7 Macca
- 8-9 Anna Price
- 11 Jenny Wilkes
- 12 New to the Women's Game?
- 14 Pack Profile
- 20-25 Anna Price #300
- 26-29 Our Visitors
- 31 All the stats
- 34 Reserves
- 36-57 The Season in pictures
- 58 The Pygott & Crone Cup
- 62 The Final Word from Jeff Shi

## 64 Squads

## PROGRAMME

**Editor** Mike Capewell  
**Assistant editor** Simon Faulkner  
**Special thanks** Jenny Wilkes, Tony Leighton.  
**Cover** Simon Faulkner  
**Design** Alchemy Creations [alchemycreations.co.uk](http://alchemycreations.co.uk)  
**Photography** Simon Faulkner & Jack Thomas  
**Print** Kazoo PSG  
[www.kazoostore.co.uk/](http://www.kazoostore.co.uk/)

## AWARDS

FAWNL | Programme of the season 2018/19  
 Soccer Club Swap Shop Awards | Ladies National Runner Up 2019/20  
 Ladies National Winner 2020/21

## OFFICIAL MATCHDAY PROGRAMME

Issue #7  
**Wolves Women vs Lincoln City Women**

Friendly  
 Friday 4<sup>th</sup> June 2021  
 7pm kick off

Molineux Stadium  
 Waterloo Road  
 Wolverhampton

## HONOURS

- National Lge Div One North Champions 1993/94
- FAWPL Div One Midlands Champions 2016/17
- Midland Combination Champions 2011/12
- Midland Combination League Cup Winners 2011/12
- Birmingham County Cup Winners 1998/99, 1999/2000

## THE CLUB

**W&G Club Manager** | Andy Butler  
**First-team Manager** | Dan McNamara  
**First-team Assistant Mngr** | Jenna Burke-Martin  
**Reserve-team Manager** | Sarah Lowden  
**Reserve-team Assistant Mngr** | Jodie Williams  
**First-Team Physios** | Jenny Stretton & Paul Taylor  
**First-team Sports Scientist** | Nathan Maxfield  
**Goalkeeping coach** | Nick Hitchman  
**Fitness coach** | Roy Williams  
**First-team coach** | Marcus Webber  
**Opposition analysis / Set Piece Lead** | Hugh MCluskie  
**Reserve-team coach** | Tom Kalinowski

**RTC U16 Head Coach** | Tom Warren  
**RTC U16 Assistant Coach** | Josh Darlington  
**Youth Development Phase Lead** | Danny Heath  
**RTC U14 Head Coach** | Greg Warren  
**RTC U14 Assistant Coach** | Jamie Anderson  
**Foundation Phase Lead** | Steve Millichamp  
**RTC U12 Head Coach** | Tom Wellings  
**RTC U12 Assistant Coach** | Lucy Jelf  
**RTC U10 Head Coach** | Liam Turner  
**RTC U10 Assistant Coach** | Scott Langford  
**RTC Goalkeeper Coach** | Josh Uppal  
**RTC Physio** | Dimitrios Tsimpolis  
**RTC Sports Science** | Nathan Maxfield  
**RTC Support Coach** | Charlotte Brown

## CLUB COMMITTEE

**Chair** | Jenny Wilkes  
**Secretary** | Brian Churm  
Andy Butler, Pete Myatt, James Orotayo, Simon Faulkner

## VIDEOGRAPHY

Christos Makarounas

Wolves is an equal-opportunities employer who is committed to upholding the principles of equality, diversity and human rights.

Supporters are urged to report any incident immediately to the nearest steward. Doing so allows stewards to immediately deal with the situation. Any incident dealt with by a steward will automatically be logged and then detailed in the steward's report, which will then be passed to the Operations team.

Wolves takes very seriously its responsibility to protect children in its care. If you have any questions regarding child safeguarding at Wolves, please contact safeguarding officer Lisa Carter on 07833 051063.

The views in this programme are not necessarily the views of Wolves. Material in this programme is copyrighted and may only be reproduced with the written permission of Wolves. Wolves has made every effort to trace the copyright holders of all photographs used.



**WELCOME  
TO WOLVES WOMEN  
& MOLINEUX**



## MANAGER

## DAN McNAMARA

Good evening all,

Welcome to Molineux for what we hope will be a memorable occasion for all involved.

There really is only one place to start this evening and that's the news that we all received on Wednesday afternoon. We are finally getting the promotion this group have deserved for so long back to Tier 3. It sounds strange, but I found the news quite overwhelming at first. The years of dedication from my staff and players had been rewarded with an email about promotion.

Once the news sank in though, I don't think anyone can argue how much the players have shown they deserve it. I must thank everyone that's made it possible over the last few years. The chairman, the directors, our committee, Steve Cullis and everyone at the club who has made this journey so special so far - we all thank you for the support. The families who have supported all the players and staff through the tough times we have faced. My staff for their application, support and dedication to the journey, even when I have been a nightmare. The players, old, young, past and present, you have made this journey special for me over the years and I hope there are more great moments to come. The final thanks is to my Captain who deserves this more than anyone. Anna, your dedication to this football club has been amazing over the years and I look forward to seeing you grace the Golden Palace turf for the first time tonight.

Now we must forget about the promotion for now and concentrate on the job we have this evening. We have a very competitive fixture against a very good Lincoln City side who I am sure would have pushed us all the way should the season have been continued. I am also delighted to share this occasion with the Lincoln City Manager, Lee Mitchell who is a good friend. I hope you and all the players, staff and fans had a safe trip over and enjoy the evening.

I am delighted to also welcome back our fans to such an event. The last season hasn't been the same without your support and I know the girls have really missed you all. Lets hope this is the start of your return to the stands and you can support us on our return to Tier 3.

I hope you all enjoy the evening tonight. There will be a number of presentations as the evening goes on. The girls have received some amazing gifts from Jeff, the directors and the club which they are very grateful for. Jen Anslow will be retiring after 230 appearances for the club, an amazing achievement as I am sure you will agree. The Pygott and Crone Trophy which we won after lockdown will be presented and also we will have a small celebration with you all on our promotion.

I have said it many times over the last few years, football is about creating moments and memories together. Tonight will be long overdue, but one I hope will unite us all in years to come. Enjoy it and let's make it a night to remember.

Dreaming is for free.

Macca

#onepack

A handwritten signature in black ink, appearing to read 'Dan McNamara', is written over a white background.

## ANNA PRICE CAPTAIN

**We have been so overwhelmed with the support we have received this season both on and off the pitch. I could not be prouder to captain this special group of players. It has been a season like no other and to end it playing on Molineux in front of our friends and family after seven months of them not being able to be there makes it a momentous occasion for everyone.**

After our last season being null and void and being so close to being crowned league champions, it was always going to be a test to see whether we had what it takes to bounce back and do it again. League form, we just continued where we left off. The win at Lincoln away back in October was the standout league moment for us. Winning 3-2 and us scoring the winner in the last minute of injury time was like a fairy tale. We maintained our perfect league form with six wins in six.

Unfortunately six league games was all we played before the season was curtailed yet again. To say we were devastated with this decision is an understatement. It was the lowest point in my football career. The FA Cup however was resuming, we still had something to work for. I don't think any of us knew what the next three rounds had in store.

After four months without kicking a ball, beating Nottingham Forest on penalties after 120 mins was unbelievable. We then went again the following week travelling to Watford, another higher tiered opposition and won 4-1. This just highlighted the talent we have within the squad but more importantly the togetherness and belief we have as a group. Blackburn Rovers from the Championship were who we faced in Round Four. This was an unbelievable experience for us, the furthest Wolves Women had got in the competition for over 20 years. It was a very special day for everyone involved. The launch of live streaming of FA Cup games meant our friends and family could share it with us as well as a new cohort of Wolves Women fans.

It truly has been a season to remember. Memories that will stay with me forever. Earlier this week we received the news of promotion to Tier 3 through the FA's league restructure. This is not how you would ever picture yourself getting promoted but with what we have done on and off the pitch particularly the last two seasons, we finally have got the promotion we deserve and I could not be prouder!

Enjoy the game and thank you for all of your support.  
Anna

*Anna Price #4* 🐾





# WOLVES RTC OPEN TRAINING SESSIONS

Wolves Women and Girls are excited to offer the opportunity for any female footballers between the ages of 8 and 15 (current school years 4 – 10) to attend an open training session with Wolves RTC & train at Wolves & Wolves Women's Sir Jack Hayward Training Ground.

To register interest please find our expression of interest form here: <https://forms.office.com/r/fWP66jJy0S>  
For any queries, please email: [louisguttridge@wolves.co.uk](mailto:louisguttridge@wolves.co.uk)

#ONEPACK



## WOLVES WOMEN CHAIR



### JENNY WILKES

Yay! We're at Molineux! Let's make this an occasion to remember after what has been a season like no other. After the disappointment of null and voiding last year with the league title almost in our grasp, we were hoping to get back on track this time, but were devastated when our promotion campaign was curtailed once again after only six games.

Macca and his staff did an amazing job keeping the players fit – both physically and mentally, and it showed as they came back in style with that impressive FA Cup run, as well as both the first and reserve teams coming out as champions in the Pygott and Crone Cup.

There's been a great momentum around the team in the last few weeks with the live streaming of games and Wolves directors in attendance. It was brilliant to hear Jeff Shi and Scott Sellars talking so positively last week about the future of girls' and women's football at Wolves, giving girls the same opportunities as boys, and we really appreciate their support in getting today's game on. To top it off, we've finally heard

this week that we've been awarded upward movement to the third tier by the FA. I'm so pleased for Macca, all the staff, players and volunteers after the challenges they've overcome. It's no more than they deserve.

So today's all about celebrating and enjoying the experience. It's our chance to thank our families, friends and fans for all their support over such a difficult time.

I wonder how many people remember the last and only other time we played at Molineux. It was 24th April 2002, when we were beaten 7-1 by an impressive Birmingham City side who went on to win promotion and play a major role in the development of top-flight women's football. I remember it as a great occasion, but of course we were very disappointed to lose. I'm pleased to say that things are very different now, with much more support from the club, and exciting new plans ahead which you can read today from Jeff Shi.

Claire Hakeman – now a regular contributor to Wolves TV – was part of the team on that day, along with future England star Emily Westwood. Anna Price (then Perks) was in the squad but didn't get on as she was just 15 and new to the first team. Jen Anslow came on as a substitute, which is fitting as she leaves us today after an impressive career. Thank you for all your hard work and dedication Jen...we'll miss you.

I'd also like to congratulate our amazing captain Anna Price on being named Wolves Women Player of the Season and the club's Community Champion, alongside Conor Coady, for her work with Wolves Foundation. She's always there for the players – and thanks to her hubby Liam who is always there for her!

Thanks too to Macca who's held everything together in very difficult circumstances. I know it hasn't been easy, but he's finally got his just rewards.

We're delighted to host Lincoln City here for this special game. Let's enjoy it, before we start looking ahead to next season and an exciting new era for Wolves Women and Girls.

Jenny Wilkes  
Chair, Wolves Women

# NEW TO THE WOMEN'S GAME?



## START HERE

Women's football is seeing a surge in interest, with increased media coverage, larger attendances at games, and the raised profiles of female footballers. Your support is what helps the game grow, and we can inspire a new generation.



Wolves Women currently sit in the fourth tier, which is equivalent to the men's League Two. Last season we had a comfortable lead at the top of the table, looking set for promotion, when the Coronavirus pandemic hit and the season was null and voided. This season was again curtailed after just six games, with Wolves undefeated once more.

This time the FA has announced a restructure to support the stability and integrity of the women's football pyramid, giving clubs the opportunity to apply for upward movement.

Wolves have heard this week that they have been successful in their application and next season will play in the Northern Premier Division (Tier Three).

## SO WHERE ARE WOLVES WOMEN IN THE LEAGUE?



## TIMELINE

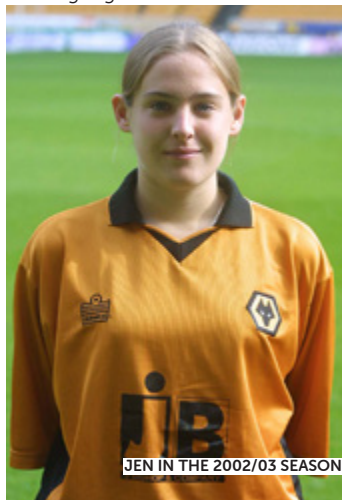
- Summer 1975**  
Heathfield Rovers formed
- Summer 1976**  
Heathfield Rovers become Wolverhampton & Wednesbury Tube
- Summer 1982**  
Wolverhampton & Wednesbury Tube become simply Wolverhampton Ladies
- September 1991**  
Wolverhampton Ladies join Women's National League Division One North (Tier 2)
- May 1994**  
Wolverhampton Ladies win National League Division One North and promoted to Premier League National Division (Tier 1)
- July 1994**  
Wolverhampton Ladies become Wolverhampton Wanderers Women
- April 1996**  
Wolves Women relegated to Premier League Northern Division (Tier 2)
- March 1999**  
Wolves Women win Birmingham County Cup
- March 2000**  
Wolves Women retain Birmingham County Cup
- May 2007**  
Wolves Women relegated to the Midland Women's Combination (Tier 3)
- April 2012**  
Wolves Women win Midlands Combination League & Cup double and promotion to Premier League Northern Division (Tier 3)
- April 2015**  
Wolves Women relegated to Women's Premier League Midlands Division One (Tier 4)
- May 2017**  
Wolves Women win Women's Premier League Midlands Division One and promoted to Premier League Northern Division (Tier 3)
- May 2018**  
Wolves Women relegated to Women's Premier League Midlands Division One (Tier 4)
- March 2020**  
Wolves Women miss out on promotion to Premier League Northern Division (Tier 3) after null and voiding of the league due to COVID-19 with Wolves clear at the top of the table.
- June 2021**  
The FA announces a restructure of the league due to the COVID-19 pandemic and Wolves Women are successful in their application for upward movement to Tier 3.

# #11 JEN ANSLOW LEFT WING

One of the longest serving members of the squad, Jen Anslow debuted almost two decades ago. Her first appearance in an old gold shirt came as a second half substitute in August 2001 in a 2-0 victory at Garswood Saints. She featured again the following week in the return fixture with Garswood and went on to make nine first team appearances, notching her first goal late in the season in a two-goal win over local rivals Aston Villa.

The following two seasons saw her gain a regular berth in the team, featuring along the length of the left side as she dictated play with her 'cultured left peg'. In 2005 she headed to Loughborough University, playing her football for Loughborough Students before returning for the 2008/09 season, missing only four games throughout the campaign.

With Wolves Women now in the Midland Combination League she returned to the National League stage with Derby County in the Summer of 2009. Alongside former teammate Nicole Ledgister she was a regular with the Rams over the next two and a half campaigns, racking up almost a half century of appearances with eight goals.

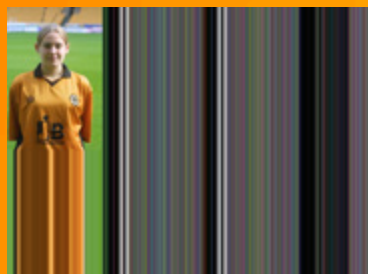


JEN IN THE 2002/03 SEASON

# THE PACK PROFILES



JEN IN ACTION VS LINCOLN IN THE 2003/04 SEASON



2012 UMBRO TOURNAMENT WITH ANNA PRICE

## WOLVES WOMEN CAREER STATISTICS

	League		WFA Cup		League Cup		B'ham CC		Total	
	apps	goals	apps	goals	apps	goals	apps	goals	apps	goals
2001-02	4 (4)	1							4 (4)	1
2002-03	11 (6)	1	0 (1)	0	1	0	2	0	14 (7)	1
2003-04	11	1			3	0			14	1
2004-05	0 (1)	0							0 (1)	0
2008-09	17	3	2	0	1	0	4	1	24	4
2011-12	12	2	2	0	3	1	4	0	21	3
2012-13					0 (1)	0			0 (1)	0
2014-15	18	0	2	0	2	0	4	1	26	1
2015-16	21	5	3	3			4	6	28	14
2016-17	20 (1)	4	4	2	3	1	4	1	31 (1)	8
2017-18	15	5			2	0	3	1	20	6
2018-19	16 (3)	8	2 (1)	0	1	0	1	0	20 (4)	8
2019-20	2 (3)	0	1	0	1 (1)	0	1 (1)	0	5 (5)	0
<b>Total</b>	<b>147 (18)</b>	<b>30</b>	<b>16 (2)</b>	<b>5</b>	<b>17 (2)</b>	<b>2</b>	<b>27 (1)</b>	<b>10</b>	<b>207 (23)</b>	<b>47</b>

Her career took a hiatus before she fully returned to Wolves Women for the 2014/15 campaign. Now featuring as an attacking left-back, she was a virtual ever present, but her skills were not able to save Wolves from the drop down to the Midlands Division One. The following term she missed just a single fixture and had her best season to date in goalscoring terms, grabbing 14 in the season including her only hat-trick as she netted four times against Coundon Court in a Birmingham County Cup tie.

The 2016/17 season was a successful one for Wolves Women as they captured the title with Anslow again featuring prominently. Once more she missed only a single game and found the net eight times, as well as providing many assists for Jade Cross and company up top. Over the next two seasons, now in her early thirties, she was a valued member of the squad, using her experience to nurture the younger members of the team whilst featuring regularly and taking her total appearances past the double century mark.

The last two seasons have been severely hampered by the Coronavirus pandemic, with Jen featuring only 10 times last season. This season she has only appeared in the reserve 11 and now appears to be the ideal moment for her to step aside. Everyone at Wolves Women would like to thank Jen for her wonderful contribution to the old gold and black over the past 20 years.



JEN IN THE 2008/09 SEASON







# CREATING OPPORTUNITIES. CHANGING LIVES.

Encouraging healthier, more active people, lifelong learning and skills as well as safe, strong active communities.

Please support us.  
[wolves.co.uk/foundation](http://wolves.co.uk/foundation)



Keep up to date with  
**Wolves Foundation**



@wwfcfoundation



# Wolves<sup>TV</sup>



Visit for all the latest video highlights, behind the scenes and classic footage.

[tv.wolves.co.uk](http://tv.wolves.co.uk)

INTERVIEW

# ANNA PRICE

It was an extra special birthday weekend for Anna Price as the Wolves Women captain had a surprise presentation to mark her 300 appearances for the club and then led her team to an unexpected but thoroughly deserved FA Women's Cup second round victory over Nottingham Forest.

After her 35th birthday celebrations on the Saturday, Price was presented with a framed, commemorative team shirt by Wolves CEO Jeff Shi before Sunday's Cup tie against Forest at Castlecroft.

"It was quite a weekend," said Price. "I had a chilled, relaxing day on my birthday although I spent a lot of it thinking about the match.

"I had no idea about the shirt presentation before it was made, and it was a very emotional moment for me – overwhelming. For Jeff Shi to make the presentation was special and wow, what a piece of memorabilia to put on the wall!

"It made me even more excited to go out and play, and as a team we played



really well and deservedly earned the right to be in the third round."

Independent observers, let alone the Wolves fans who watched the game on its live TV stream, would almost certainly have agreed with Price's assessment.

Against visitors from the Northern Premier Division, a tier higher than Wolves, the home side were on top for long periods but had to settle for a 2-2 draw after extra time before winning 5-4 in a nail-biting penalty shoot-out.

Sadly for Price she missed her spot-kick, which resulted in the shoot-out going to sudden death. But a save from Forest's

Olivia Cook by goalkeeper Becky Thomas ultimately clinched victory to complete a near-perfect weekend for the skipper.

"The only bad thing for me was that penalty shoot-out miss," she added. "I was gutted. The girls consoled me, they were brilliant. I said to Bec, "you've saved me!" I was still gutted, but obviously our celebrations eased the pain."

After that team performance and result Price was confident that Wolves could progress even further in the FA Cup as they prepared to face Watford, the Southern Premier Division's top team, in the following week's third round.

"We've knocked out one Tier Three team and we can do it again," she insisted. And how right she was – a thumping 4-1 away win took Wolves into Round Four.



ANNA PRICE

**"I had no idea about the shirt presentation before it was made, and it was a very emotional moment for me – overwhelming."**

Interview by Tony Leighton  
Photos Simon Faulkner

# ANNA PRICE

# 300

## 2016/17



## 2017/18



# ANNA PRICE 300



2019/20



2018/19



2020-21



# Lincoln City Women



Introducing

# Imps Women



FOUNDED: 2004 | NICKNAME: THE IMPS | STADIUM: ACTIVE NATION YARBOROUGH, LINCOLN

## Club History

The club was formed in the mid 2000s as Nettleham Ladies in the village of the same name, located some four miles from the county city of Lincolnshire.

They commenced football life in the Lincolnshire County Women's League in 2008 and within 12 months had captured the title, and with it promotion into the East Midlands Women's Football League Division One North. They soon consolidated at this level and eventually in 2011/12 they were again title winners as they moved up to the Premier Division.

They took no time at all to acclimatise to this higher level and in their first Premier Division season achieved a mid-table fifth position. The following season they challenged for the title, but eventually had to settle for the runners-up slot, some eight points behind champions Steel City Wanderers.

The 2014/15 season should have seen them go one better and win the title as they entered their final game knowing that a victory would see them finish top by a single point. However, they failed to overcome a stubborn Long Eaton United and ended up drawing the game to finish the season an agonising point behind champions Peterborough Northern Star. They did achieve a measure of success though, when beating them in the League Cup Final.

It was again the runners-up spot the following season when this time they finished a distant 11 points behind unbeaten Long Eaton United. Having finished second in consecutive seasons, the 2016/17 season was a poor one in Nettleham terms when they only managed a mid-table position,

however, scoring 69 league goals in the season, outlined their potential.

In 2017/18 they eventually achieved the Championship when clinching the title by the small margin of three points. Losing only once all season, they maintained the lead position for virtually the whole of the campaign. They were well provided for up front where Abbie Murrell netted 16 times in only 11 games with Holly Newman chipping in with a dozen herself. They topped the season off with a 7-0 victory over Grimsby Borough in the Lincolnshire County Cup Final, their sixth consecutive victory in the competition.

The following campaign, their first in the fourth tier, they acquitted themselves well and at the season's end had secured a comfortable mid-table position. The biggest news of the season, however, came in early April 2019 when it was announced that Nettleham had agreed a partnership with Lincoln City men for the team to represent 'The Imps' from June onwards. Along with the link up, the team moved to a new home ground at the Sun Hat Villas and Resorts Stadium to share with Lincoln United.

As we all know the last two seasons have been ruined by the Coronavirus pandemic. Two years ago Lincoln were sitting safely in mid-table when the season was bought to an abrupt end, whilst this term they were performing better. Having played seven league games, they had won five times, drawn once and lost a single game - the five goal thriller with Wolves last October, a game which Wolves won deep into added time. Who is to say that they would not have been challenging for the title had the season run its true course?

# We've met before

THE LAST ENCOUNTER BETWEEN LINCOLN WOMEN AND WOLVES WOMEN  
IN THE FAWNL MIDLANDS DIVISION ONE



## Imps Women

A last-minute Lowri Walker header saw first defeat second on 25th October and extended Wolves' perfect start to the new campaign.

Anna Price, making her 300th appearance for Wolves, opened the scoring, and Wolves regained the lead through Jamila Palmer, but the hosts twice came back, before Walker won it at the death for the old gold.

It took just two minutes for Wolves to open the scoring in Lincolnshire, as Price rose highest to meet a wide Anna Morphet free-kick and looped her header over the goalkeeper for 1-0.

That early goal helped settle any Wolves nerves and it could have been two on ten minutes when Tammi George raced down the right, had an effort blocked, and then fired into the side netting.



Jade Cross had been passed fit to start and was also lively in the open stages, showing her confidence with an audacious lob over the Lincoln goalkeeper, but unfortunately, the ball failed to drop in.

In what was becoming a fiery affair, Wolves picked up where they left off in the second period, with Walker stinging the palms of the Lincoln stopper.

However, the hosts soon found their first of two equalisers when Lauryn Wilcock raced past the Wolves defence and fired into the far corner from close range.

Wolves responded positively though, first Cross had a header ruled out for offside, before Kate Evans raced clear through, but couldn't find the suitable finish on two occasions.

However, with ten minutes left, Wolves did regain the lead through a piece of individual brilliance. Palmer's magnificent half-volley from distance flew in and sent the Wolves bench wild in celebration.

Unfortunately, though, the positivity was short-lived, as Ellie Gilliat looped an effort in from near the corner flag, to stun Wolves.

Yet, there was still more drama ahead and the sting in the tail was suffered by the hosts. This time, it was Walker who headed in from close range to spark scenes of celebration, as Wolves continued their 100 per cent start.





wolves.co.uk



The home of the latest Wolves news, interviews and features.

wolves.co.uk



### Last Midlands Division 1 League Table - 2020/21

	Pld	W	D	L	F - A	Pts	GD
<b>Wolves Women</b>	<b>6</b>	<b>6</b>	<b>0</b>	<b>0</b>	<b>37 - 3</b>	<b>18</b>	<b>+34</b>
Doncaster Rov B	8	4	3	1	20 - 12	15	+8
Lincoln City	6	4	1	1	27 - 8	13	+9
Solihull Moors	6	3	2	1	20 - 11	11	+9
Long Eaton United	7	3	2	2	15 - 9	11	+6
Boldmere St Mike's	4	3	1	0	16 - 4	10	+12
Sporting Khalsa	6	2	2	2	9 - 11	8	-2
Bedworth United	7	2	0	5	8 - 18	6	-10
Wem Town	4	1	1	2	4 - 10	4	-6
Holwell Sports	6	1	1	4	9 - 18	4	-9
Burton Albion	7	1	0	6	6 - 47	3	-41
Leafield Athletic	7	0	1	6	6 - 26	1	-20

Table correct as of 14/12/2020 when curtailment to the league took place and the table was frozen.

### WOLVES WOMEN PLAYER STATS 2020/2021

	League		WFA Cup		2020-2021 Total		Wolves Total	
	apps	goals	apps	goals	apps	goals	apps	goals
1 Millie Conod	0	0	0	0	0	0	3	0
2 Lyndsey Glover	4	2	1	0	5	2	21	7
3 Natalie Widdal	3 (1)	0	2	0	5 (1)	0	211	14
4 Anna Price	5	2	5	0	10	2	304	56
5 Emma Cross	6	0	4	0	10	0	160	3
6 Alex Buck	0	0	0	0	0	0	17	0
7 Tammi George	6	2	5	0	11	2	38	9
8 Shannie Jennings	0	0	0 (2)	0	0 (2)	0	27	4
9 Jade Cross	5 (1)	9	5	4	10 (1)	13	171	147
10 Jamilla Palmer	1 (2)	2	4 (1)	1	5 (3)	3	92	56
11 Jen Anslow	0	0	0	0	0	0	230	47
12 Kate Evans	5 (1)	1	1 (3)	1	6 (4)	2	10	2
13 Bec Thomas	6	0	4	0	10	0	65	0
14 Amy Dicken	0	0	0 (3)	0	0 (3)	0	10	6
15 Kelly Darby	5	0	4	2	9	2	9	2
16 Summer Holmes	0	0	1	0	0	0	16	0
17 Katie Johnson	0	0	0 (1)	0	0 (1)	0	4	1
18 Anna Morphet	4 (2)	2	4 (1)	2	8 (3)	4	43	16
19 Alisha Miller	4 (1)	5	2 (2)	0	6 (3)	5	9	5
20 Lowri Walker	6	9	5	0	11	9	51	31
21 Eva Rogers	1 (3)	0	0	0	1 (3)	0	6	1
23 Pip Wilson	3 (1)	0	1 (1)	0	4 (2)	0	56	10
24 Anna Renken	1 (1)	1	0 (2)	0	1 (3)	1	4	1
25 Nyah Edwards	1 (2)	0	4 (1)	1	5 (3)	1	16	2
26 Talitta Chase	0 (1)	0	0	0	0 (1)	0	1	0
33 Safa Paraiso	0	0	1	0	1	0	1	0
36 Lauren Riley	0 (1)	2	0 (1)	0	0 (2)	2	2	2
42 Orla Conlon	0	0	1 (2)	0	1 (2)	0	3	0
44 Lucy Gardner	0	0	1	0	1	0	39	0
Own goals			0	1				



# WE ARE GOING UP



# WOLVES WOMEN



the FA Women's  
National League



# 2019/20 & 2020/21

# RESERVES



## RESERVES MANAGER

**Here we are! A great occasion to be at Molineux to wrap up what has been such a unique season for us all.**

As Reserves coach, this season will remain in my memory for various reasons. The way in which unity can get through tough times during the pandemic and also what the spirit of football can bring to our lives.



There are many things which we can be proud of and I certainly am when it comes to the success and progression of individuals within the reserves squad. We have seen first team debuts, stand out performances and the development of some very bright players for the future.

I'm sure I don't need to name them all, but I want to congratulate all players who have made their way into the first team this season, a credit to your hard work and efforts. A special mention in particular to Lauren Riley and Safia Paraiso who have made an excellent impact when their opportunity has presented itself to play in the first team, following many stand out performances within the reserves.

Well done to the whole reserves squad for their commitment and performances across the season, which in normal circumstances may have led to winning their respective league had the season been able to officially continue following a long string of positive results.

A welcome also to those that will be joining us from our youth pathway who will be looking to follow in the footsteps of those from this season.

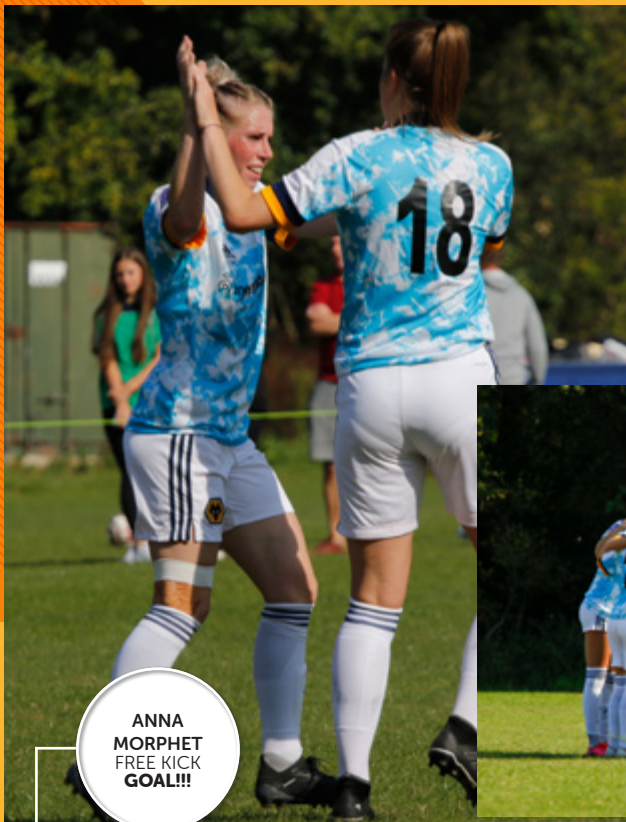
Thank you to the staff for their continued hard work to support the development of the players throughout who have been a credit to the club.

Finally - a huge congratulations to the first team and staff. They have achieved incredible things this season in regards to the league and FA Cup run. A year of inspiration which we look forward to continuing in the future.

Enjoy the final game tonight!

*Sarah Lowden*





**ANNA MORPHET FREE KICK GOAL!!!**

**Main pic:** Anna Renken scores on her debut for Wolves, celebrating with Anna Morphet

**Bottom:** Morph's inch perfect free kick beats the Leaffield 'keeper

**Below:** The Wolves Women huddle in their first appearance in the new away kit.



**LOWRI WALKER**

"I'm really happy to score in our opening game of the season and hope I can contribute each week to help the team gain three points. I'll always do my best for this team and we will always work as a pack to succeed!"



**LEAFIELD ATH 0  
WOLVES WOMEN 6**

Dickens Heath Sports Club | Sunday 20th September  
FAWNL Midlands Division 1

**MATCH STATS**

Leaffield		Wolves
3	<b>SHOTS ON</b>	16
3	<b>SHOTS OFF</b>	17
3	<b>CORNER</b>	10
0	<b>OFFSIDE</b>	3
8	<b>FREEKICK</b>	3



**Main pic:** Jamila Palmer scores the sixth goal in the 90th minute for a comfortable Wolves victory.  
**Inset top:** Anna Renken leading the Wolves forward line on her debut.  
**Inset bottom:** There's also a late goal in the day for Lowri Walker.



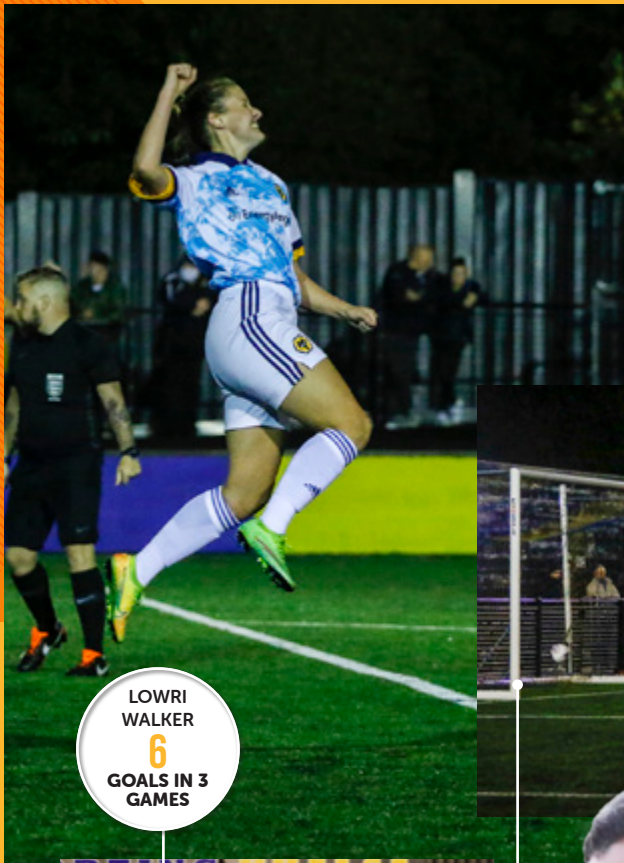
**FULL RENKEN DEBUT**



SPORTING KHALSA WOMEN 0

WOLVES WOMEN 5

Guardian Warehousing Arena, Willenhall | Wednesday 30th September  
FAWNL Midlands Division 1

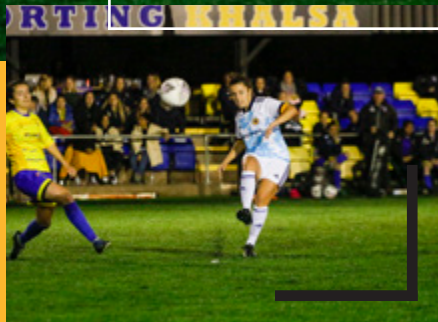


**Main pic:** Lowri Walker jumps in celebration after opening the scoring.  
**Bottom:** Kate Evans puts a ball forward in the first half in a Wolves attack.  
**Below:** Walker's follow up after a blocked shot goes into the Khalsa goal.

LOWRI WALKER  
6 GOALS IN 3 GAMES



**GOALS LOG**  
5 mins - Lowri Walker  
42 mins - Lowri Walker  
69 mins - Lowri Walker  
74 mins - Jade Cross  
84 mins - Anna Morphet



**DAN McNAMARA**

"I thought we were hungrier and had more desire. Lowri Walker was unplayable for most of the game. She brings real quality on the pitch and is a great girl to work with."



**Main pic:** Jade Cross makes it 4 to Wolves after her long-range effort hits the underside of the cross bar and ends up in the net.  
**Inset top:** The game started dry but there was heavy rain at half time and into the early part of the second half.  
**Inset bottom:** Morphet hits a deflection and makes it 5-0.



**Main pic:** Tammi George puts in a battling midfield performance.

**Bottom:** Tammi runs to celebrate with Anna Morphet who took the corner for the assist for the opening goal.

**Below:** Eva Rogers in the thick of the action.



LOWRI WALKER  
**6**  
GOALS IN 3 GAMES



**LAUREN RILEY**

"Absolutely ecstatic to get the opportunity to play with Wolves Women in the National League. It was an incredible experience which I really enjoyed, even more so managing to score two goals. Wolves Women are such a welcoming team and I just want to thank them and my coaches for all the support. This wouldn't be possible without them so thank you."



**WOLVES WOMEN 9**  
**BURTON ALBION LADIES 0**

Guardian Warehousing Arena, Willenhall | Sunday 4th October  
FAWNL Midlands Division 1 | Attendance : 100

**Wolves**

19 SHOTS ON  
22 SHOTS OFF  
15 CORNER  
8 OFFSIDE  
3 FREEKICK

**Burton**

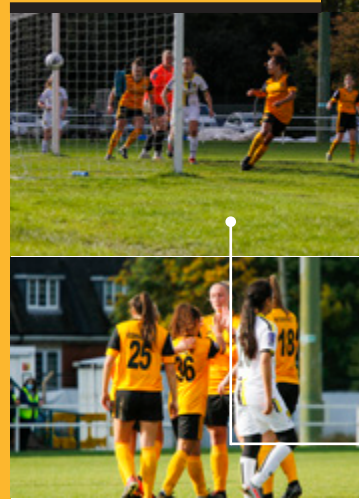
0  
0  
0  
0  
5

**GOALS LOG**

- 17 mins - Tammi George
- 21 mins - Jade Cross
- 23 mins - Jade Cross
- 27 mins - Jade Cross
- 41 mins - Jade Cross
- 50 mins - Lowri Walker
- 55 mins - Alisha Miller
- 72 mins - Lauren Riley
- 77 mins - Lauren Riley



**Above:** Tammi George heads home to open the scoring on 17 minutes.



**Main pic:** Ali Miller makes it 7-0 to Wolves after coolly slotting the ball past Langstone in the Burton goal.

**Inset top:** In her debut for Wolves Women, Lauren Riley scores in the 72nd minute to make it 8-0.

**Inset bottom:** Congratulation for Riley from captain Kelly Darby, Nyah Edwards and Anna Morphet.

DEBUT GOAL  
FOR LAUREN RILEY



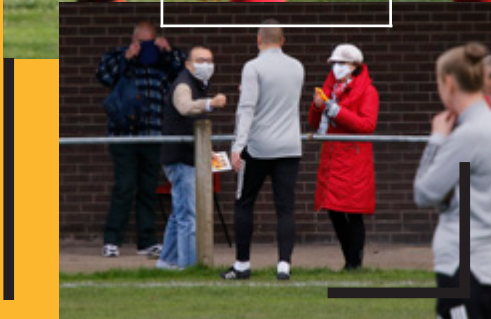
**Main pic:** Anna Price's precision header finds the back of the Wem net to put Wolves in front.

**Bottom:** Wolves Chairman Jeff Shi meets manager Dan McNamara before kick off.

**Below:** The team congratulate Lowri Walker after putting the score at 3-0 just before half time.



ANNA PRICE  
**FIRST**  
GOAL OF THE  
20/21 SEASON



**DAN McNAMARA**

"I thought we were hungrier and had more desire. Lowri Walker was unplayable for most of the game. She brings real quality on the pitch and is a great girl to work with."



**WEM TOWN LADIES 0  
WOLVES WOMEN 6**

Wem Town FC | Sunday 11th October  
FAWNL Midlands Division 1 | Attendance : 100

Wem		Wolves
1	SHOTS ON	15
1	SHOTS OFF	10
2	CORNER	10
0	OFFSIDE	5
10	FREEKICK	9

**GOALS LOG**

- 2 mins - Anna Price
- 4 mins - Alisha Miller
- 44 mins - Lowri Walker
- 63 mins - Jade Cross
- 65 mins - Jade Cross
- 75 mins - Jade Cross (penalty)



**Main pic:** Jade Cross makes it 6 to Wolves after her perfectly placed penalty beats Wem 'keeper Sarah Parkes  
**Inset top:** Lowri Walker 'megs a Wem midfielder on another Wolves attack.  
**Inset bottom:** The team congratulate Jade Cross on the completion of her hat-trick.

**FIRST HOME**  
WIN OF THE SEASON



# SUTTON COLDFIELD TOWN 0 WOLVES WOMEN 2

Coles Lane, Sutton Coldfield | Sunday 18th October 2020  
The Vitality Women's FA Cup 2nd Qualifying Round | Attendance : 201



**Main pic:** Jamila Palmer in action  
**Bottom:** Tammi George was a handfull for the Sutton midfield  
**Below:** Captain Anna Price congratulates Jade Cross for scoring the opening goal on 7 minutes



**GOALS LOG**  
7 mins - Jade Cross  
62 mins - Kate Evans



**Main pic:** Tammi George controls the ball on another Wolves attack.  
**Inset top:** Kate Evans took her goal tally to 3, hitting the back of the Sutton net in the 62nd minute.  
**Inset bottom:** Orla Conlon takes the ball past a Sutton defender on the right wing.

**DAN McNAMARA**

"It's great to be in the next round. I never hide my thoughts on the FA Cup, so I'm really pleased and it's important for us to get into the next round."



# LINCOLN CITY WOMEN 2

# WOLVES WOMEN 3

Active Nation Yarborough Leisure Centre, Lincoln | Sunday 25th October  
FAWNL Midlands Division 1 | Attendance : 40



**Main pic:** Anna Price opened the scoring in the second minute  
**Bottom:** The pre match huddle  
**Below:** Celebrations after Price puts Wolves ahead



## LOWRI WALKER

"It was great to get the winning goal at Lincoln but credit to the whole team and staff as it was a massive win for us going forward, we all grafted and worked as a pack."



**Above:** Jamila Palmer puts Wolves back ahead in the 77th minute

## GOALS LOG

- 2 mins - Anna Price (Wolves)
- 47 mins - Lauryn Wilcock (Lincoln)
- 77 mins - Jamila Palmer (Wolves)
- 83 mins - Ellie Gilliatt (Lincoln)
- 90+9 mins - Lowri Walker (Wolves)



**Main pic:** Lowri Walker scores at the very end of injury time to give Wolves the 3 points

**Inset top:** Jamila Palmer celebrates her goal

**Inset bottom:** Kate Evans challenging in midfield



LOWRI  
WALKER  
SCORES IN  
90+9





# WOLVES WOMEN 3

# STOURBRIDGE LADIES 0

Sir Jack Haywood Training Ground, Compton, Wolverhampton | Sunday 13th December 2020  
The Vitality Women's FA Cup First Round | Attendance : Behind Closed Doors

Wolves		Stour
10	SHOTS ON	0
17	SHOTS OFF	2
8	CORNER	1
2	OFFSIDE	0
7	FREEKICK	11

## GOALS LOG

- 37 mins - Anna Price
- 64 min - Jade Cross
- 87 mins - Kelly Darby



Above: Celebrations after Kelly Darby puts the score at 3-0



SAFIA PARAISO  
**DEBUT**  
WOLVES  
WOMEN 1ST  
TEAM

**Main pic:** Safia makes her debut for the first team at Compton

**Bottom:** Jam Palmer celebrates with corner taker Anna Morphet, who assisted the opening goal

**Below:** Captain Anna Price gets the ball over the line to put the Wolves ahead towards the end of the first half



## DAN McNAMARA

"It was difficult. The circumstances were difficult and the weather were difficult. I'm just really proud of the players in what was ultimately a really professional performance."



**Main pic:** The rain was consistent through the entire game  
**Inset top:** Jade Cross makes it 2-0 just after the hour  
**Inset bottom:** Orla Conlan and Jade Cross celebrate after the second goal





**Main pic:** Nyah Edwards in action

**Bottom:** A precision shot from Nyah in the 65th minute beats Agguire who just manages to get a hand to it but cant stop it hitting the net

**Below:** Rosie Axten beats the defence in the 49th minute to put Forest ahead



**DAN McNAMARA**

"The way the girls have come back is nothing short out outstanding and hopefully we can take that into Sunday, and it will stand us in good stead ahead of a really tough game."



**WOLVES WOMEN 2**

**FOREST WOMEN 2**

AET (1-1 FT) WOLVES WIN 5-4 ON PENALTIES

CKW Stadium, Castlecroft, Wolverhampton | Sunday 4th April 2021  
The Vitality Women's FA Cup Round 2 | Attendance : Behind closed doors

Wolves		Forest
11	SHOTS ON	2
6	SHOTS OFF	3
7	CORNER	1
1	OFFSIDE	5
10	FREEKICK	16

**GOALS LOG**

- 49 mins - Rosie Axten (Forest)
- 65 mins - Nyah Edwards (Wolves)
- EXTRA TIME
- 93 mins Olivia Cook OG (Wolves)
- 105+3 mins Rosie Axten [Pen] (Forest)



**Above:** The moment Bec Thomas saves the penalty from Olivia Cook

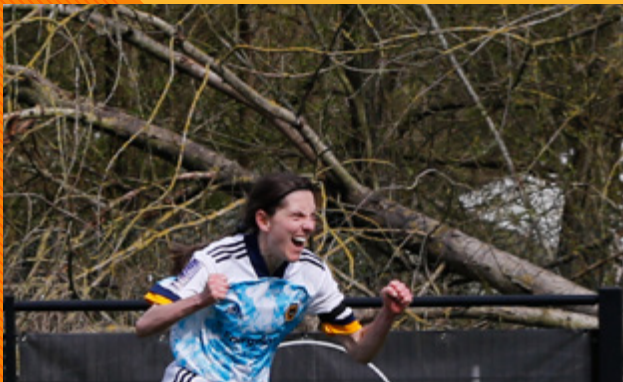


**Inset top:** Sudden death penalties - Kelly Derby makes no mistake and it's ADVANTAGE WOLVES!

**Inset bottom:** Bec Thomas punches the air after saving Olivia Cook's penalty in sudden death

**Main pic:** Through to ROUND3!





**Main pic:** Jade Cross opened the scoring in the ninth minute

**Below:** The pre match huddle

**Bottom:** After beating the entire Watford defence, Jade Cross coolly sends the ball into the open goal



**DAN McNAMARA**

"I don't want to be disrespectful to Watford because they're a great outfit and they have absolutely fantastic players, but that's what heart gets you, that's what determination gets you, and that's what a unified group gets you. They deserve that, as does everyone back at home as well."



**WATFORD WOMEN 1**

**WOLVES WOMEN 4**

Gaywood Park, Kings Langley | Sunday 11th April 2021  
The Vitality Women's FA Cup Round 2 | Attendance : Behind closed doors



**GOALS LOG**

- 9 mins - Jade Cross (Wolves)
- 41 mins - Katie O'Leary (Watford)
- 52 mins - Kelly Darby (Wolves)
- 72 mins - Anna Morphet [Pen] (Wolves)
- 76 mins - Jamila Palmer (Wolves)



**Main pic:** Celebrations after Kelly Darby makes it 2-1 to Wolves in the 52nd minute

**Inset top:** Morphet' takes the free kick from the edge of the area....

**Inset bottom:** .... Kelly Darby connects perfectly to send the ball past Wiggins in the Watford goal

**KELLY DARBY**  
SCORES IN 52ND MIN



**Main pic:** Anna Morphet steps up to take the penalty in the 72nd minute

**Bottom:** Tammi is brought down in the Watford penalty area

**Below:** Tammi and Jade congratulate Morphet on converting the penalty to make the score 3-1



**Right:** FULL TIME and the squad celebrates on the Kings Langley pitch



# WATFORD WOMEN 1 WOLVES WOMEN 4

Gaywood Park, Kings Langley | Sunday 11th April 2021  
The Vitality Women's FA Cup Round 2 | Attendance : Behind closed doors

Watford		Wolves
3	SHOTS ON	6
6	SHOTS OFF	6
2	CORNER	5
2	OFFSIDE	2
10	FREEKICK	6



**Above:** Celebrations after Jamila Palmer puts the score at 4-1

**Below:** Jamila unleashes one of her trademark ROCKETS at the Watford goal



# #ONEPACK



# WOLVES WOMEN 2 BLACKBURN WOMEN 5

The New Bucks Head Stadium Telford | Sunday 18th April 2021  
The Vitality Women's FA Cup Round 4 | Attendance : Behind closed doors



**Main pic:** Celebrations as Wolves go one up in the 10th minute

**Bottom left:** Ali Miller celebrates after her goal.

**Bottom right:** The strike that beats a Championship goalkeeper.

**Below:** Miller's ball makes the way into the Blackburn net!



Wolves		Rovers
7	SHOTS ON	7
5	SHOTS OFF	4
6	CORNER	2
1	OFFSIDE	2
12	FREEKICK	8

### GOALS LOG

10 mins - Ali Miller (Wolves) 1-0  
 25 mins - Maria Edwards (Rovers) 1-1  
 41 mins - Saffron Jordan (Rovers) 1-2  
 HT - 1-2  
 54 mins Elise Hughes (Rovers) 1-3  
 57 mins - Lowri Walker (Wolves) 2-3  
 69 mins - Georgia Walters (Pen) (Rovers) 2-4  
 73 mins - Georgia Walters (Rovers) 2-5  
 FT 2-5



**Above:** Lowri Walker brings the score back to 2-3 in the 57th minute.



**Inset top:** Wolves CEO Jeff Shi was at the game

**Inset bottom:** The players and staff applaud the end of a challenging and frustrating season.

**Main pic:** WE ARE ONE PACK!

# Pygott & Crone Cup 2021!



pygott-crone.com

The reserves started their campaign with a 2-1 win against Lincoln, Dani Staley and Daisy Wickett scoring the goals. Lauren Riley and Shelbie Cartwright were then on target as Stoke were beaten 2-0.

The final game brought a resounding 10-3 victory over Loughborough, four goals coming from Riley with two for Cartwright and one apiece for Staley, Wickett, Courtney Dilger and Beth Lewis.

The team finished the tournament with an impressive goal difference of +10, delighting manager Sarah Lowden. "The girls have been outstanding throughout the Cup," she said, "and showed how much talent is in that squad despite their youth."

After the thrills of their FA Cup run Wolves Women turned their attention to the Pygott & Crone Cup, a tournament in which they met Stoke City, Lincoln City and Loughborough Foxes at both first and second team levels.

With the league season curtailed due to Coronavirus it gave the clubs an opportunity to play competitive football, each Wolves side producing impressive performances in winning all of their games to be crowned overall champions.

The senior team started their campaign well, beating Stoke 5-1 with goals from Jamila Palmer, Tammi George, Amy Dicken, Ali Miller and Anna Morphet.

They had to come from behind in their second outing, against Loughborough, but

despite being below their best they ran out 2-1 winners courtesy of a last minute goal from Summer Holmes after debutant Leo Joyce had hit the equaliser.

They again went a goal down when they took on Lincoln, but a hat-trick from Miller plus a Joyce strike turned the game on its head as a 4-2 victory saw them finish the tournament with a 100 per cent record.

Manager Dan McNamara felt it had been an excellent test for his side. He said: "We wanted to maximise playing time and wanted something a bit more than just friendlies, so this competitive tournament put together by us and Lincoln was just what we needed. You enter every competition wanting to win it, so it was fantastic for the girls."

	18th April 2021	25th April 2021
Res Game 1	Wolves 2 - 1 Lincoln City	1st Team 1
		Wolves 5 - 1 Stoke City
Res Game 2	25th April 2021	2nd May 2021
	Stoke City 0 - 3 Wolves	1st Team 2
		Wolves 2 - 1 Loughborough
Res Game 3	2nd May 2021	9th May 2021
	Loughborough 3 - 9 Wolves	1st Team 3
		Wolves 2 - 4 Stoke City

### First Team Table

Pos	Team	Pld	W	D	L	GFGA	GD	Pts	
1	Wolves	3	3	0	0	11	4	+17	9
2	Lincoln	3	1	1	1	9	9	0	4
3	Stoke	3	1	1	1	7	7	0	4
4	L'boro	3	0	0	3	4	11	-7	0

### Reserve/Development Team Table

Pos	Team	Pld	W	D	L	GFGA	GD	Pts	
1	Wolves	3	3	0	0	14	4	+10	9
2	Stoke	3	2	0	1	6	3	+3	6
3	Lincoln	3	0	1	2	3	6	-3	1
4	L'boro	3	0	1	2	6	16	-10	1

### Overall Table

Pos	Team	Pld	W	D	L	GFGA	GD	Pts	
1	Wolves	6	6	0	0	25	8	+17	18
2	Stoke	6	3	1	2	13	10	+3	10
3	Lincoln	6	1	2	3	12	13	-1	5
4	L'boro	6	0	1	5	10	27	-17	1



2020/2021

FIXTURES  
RESULTS  
LINE-UPS

FAWNL  
Vitality WFA Cup  
Pygott & Crone Cup

Red - 1st sub  
Green - 2nd sub  
Blue - 3rd sub  
Pink - 4th sub  
Gold - 5th sub

**Bold fixture** - Home fixture  
**Bold player** - Scorer  
● - Goal scored  
○ - Penalty scored

+ - Own goal  
! - Yellow card  
! - Red card

RES POS ATT

SEPTEMBER

20	Leafield Athletic	6-0	2	127
27	<b>Solihull Moors</b>	8-1	1	0
30	Sporting Khalsa	5-0	1	150

OCTOBER

4	<b>Burton Albion</b>	9-0	1	100
11	Wern Town	6-0	1	131
18	Sutton C'field Tn (WFAC2Q)	2-0	-	201
25	Lincoln City	3-2	1	40

NOVEMBER

1	Long Eaton United (WFAC3Q)	1-0	-	126
---	----------------------------	-----	---	-----

DECEMBER

13	<b>Stourbridge</b> (WFAC R1)	3-0	-	0
----	------------------------------	-----	---	---

APRIL

4	<b>Nottingham Forest</b> (WFAC R2)	2-2	-	0
FT 1-1 AET 2-2 Wolves win 5-4 on penalties				
11	Watford (WFAC R3)	4-1	-	0
18	<b>Blackburn Rovers</b> (WFAC R4)			
25	<b>Stoke City</b> (P&C Cup)	5-1	-	0

MAY

2	<b>Loughboro' Foxes</b> (P&C Cup)	2-1	-	0
9	Lincoln City (P&C Cup)	4-2	-	0

												SUBSTITUTES					REF			
Thomas	Darby	E.Cross	Morphet ●	Price	Glover	George ●	Walker ●●	Palmer ●	Renken ●	Wilson	J.Cross	Evans	Rogers	Widdal	Edwards	M.Shutt				
Thomas	Darby	E.Cross	Widdal	Price	Glover ●●	George	Walker ●	Miller ●●	J.Cross ●	Evans ●	Morphet ●	Rogers	Wilson	Renken	Edwards	J.Griffiths				
Thomas	Darby	E.Cross	Widdal	Price	Glover	George	Walker ●●●	Wilson	J.Cross ●	Evans	Morphet ●	Rogers	Miller	Renken	Edwards	G.Thrower				
Thomas	Darby	E.Cross	Morphet	Edwards	Rogers	George ●	Walker ●	Wilson	J.Cross ●●●●	Miller ●	Wilson	Widdal	Glover	Price	Riley ●●	L.Mountain				
Thomas	Widdal	E.Cross	Morphet	Price ●	Glover	George	Walker ●	Miller ●	J.Cross ●●●	Evans	Chase	Palmer	Edwards	Rogers	Renken	L.Reddin				
Thomas	Widdal	E.Cross	Morphet	Price	Glover	George	Walker	Palmer	J.Cross ●	Evans ●	Conlan	Jennings	Wilson	Rogers	Chase	Edwards	Miller	Renken	Gardner	J.Stenson
Thomas	Darby	E.Cross	Morphet	Price ●	Wilson	George	Walker ●	Miller	J.Cross	Evans	Widdal	Jennings	Renken	Palmer ●	Gardner	A.Barber				
Gardner	Darby	E.Cross	Widdal	Price	Wilson	George	Walker	Palmer	J.Cross ●	Edwards	Evans	Miller	Morphet	Renken	Conlon	Thomas	O.Thornhill			
Thomas	Darby	Pariso	Morphet	Price ●	Edwards	George	Walker	Palmer	J.Cross ●	Conlon	Jennings	Conod	Dicken	Johnson	Miller	Wilson	Chase	Riley	J.Griffiths	
Following the government lockdown from January to April 2021 due to the COVID-19 pandemic, the FAWNL Midlands Division 1 league was curtailed.																				
Thomas	Darby	E.Cross	Morphet	Price	Edwards ●	George	Walker	Miller	J.Cross	Holmes	Conod	Jennings	Palmer	Pariso	Chase	Evans	Dicken	Conlan	Johnson	C.Matthews
Thomas	Darby ●	E.Cross	Morphet ●	Price	Edwards	George	Walker	Miller	J.Cross ●	Palmer ●	Conod	Johnson	Riley	Conlan	Evans	Pariso	Glover	Anslow	Dicken	S.Fullicks
Thomas	Darby	E.Cross	Morphet	Price	Holmes	George	Walker	Miller	J.Cross	Palmer	Conod	Widdal	Dicken	Riley	Jennings	Edwards	Conlan	Evans	Pariso	R.Eley
Thomas	Darby	E.Cross	Morphet ●	Holmes	Evans	George ●	Johnson	Miller ●	J.Cross	Palmer ●	Turner	Glover	Widdal	Price	Jennings	Dicken ●	Clements	Edwards	Conlan	
Thomas	Darby	E.Cross	Widdal	Joyce ●	Conlan	George	Holmes ●	Evans	Miller	Palmer	Turner	Morphet	Clements	Price	Glover	Dicken	J.Cross	Edwards	Jennings	
Turner	Widdal	E.Cross	Morphet	Price	Holmes	George	Edwards	Miller ●●●	J.Cross	Palmer	Jennings	Dicken	Evans	Johnson	Conlan	Pariso	Joyce ●			



THE JOURNEY FOR WOLVES WOMEN IN THE 2020/21 VITALITY WOMEN'S FA CUP

18th October 2020	1st November 2020
2nd Qual 0 2	3rd Qual 0 1
4th April 2021	13th December 2020
Round 2 2 2 Wolves won 5-4 on penalties	Round 1 3 0
11th April 2021	18th April 2021
Round 3 1 4	Round 4 2 5

THE 2021 PYGOTT & CRONE CUP

18th April 2021	25th April 2021
Res Game 1 2 1	1st Team 1 5 1
25th April 2021	2nd May 2021
Res Game 2 0 3	1st Team 2 2 1
2nd May 2021	9th May 2021
Res Game 3 3 9	1st Team 3 2 4

First Team Table

Pos	Team	Pld	W	D	L	GF	GA	GD	Pts
1	Wolves	3	3	0	0	11	4	+17	9
2	Lincoln	3	1	1	1	9	9	0	4
3	Stoke	3	1	1	1	7	7	0	4
4	L'boro	3	0	0	3	4	11	-7	0

Reserve/Development Team Table

Pos	Team	Pld	W	D	L	GF	GA	GD	Pts
1	Wolves	3	3	0	0	14	4	+10	9
2	Stoke	3	2	0	1	6	3	+3	6
3	Lincoln	3	0	1	2	3	6	-3	1
4	L'boro	3	0	1	2	6	16	-10	1

Overall Table

Pos	Team	Pld	W	D	L	GF	GA	GD	Pts
1	Wolves	6	6	0	0	25	8	+17	18
2	Stoke	6	3	1	2	13	10	+3	10
3	Lincoln	6	1	2	3	12	13	-1	5
4	L'boro	6	0	1	5	10	27	-17	1

THE FINAL WORD

# WOLVES CEO JEFF SHI



To see Wolves Women play at Molineux today will be a fantastic occasion for all involved and shows the brilliant progress being made over recent years.

Congratulations goes to Dan McNamara, his players and staff on their deserved progression to the FA Women's National League Northern Premier, the third tier of women's football, via a successful application for upward movement, after being denied that achievement on the pitch in the last two years – a period which has shown the supporter interest is there for our women's team.

The streams for the three FA Cup games were accessed around 55,000 times, which is extremely encouraging, and I extend my own congratulations to the team for that impressive cup run during the spring.

During that period the women's team featured many young players, some of whom came from our own Academy, which is something we want to see more of at Wolves in the future.

We are very keen to encourage the girls here in Wolverhampton to have the same chance of playing football as the boys, which is why this summer all girl age groups will officially join our Academy.

They will share the same chance to enjoy the facilities and pitches we use, to have the education from the coaches – we will share the same objective, which is to help them have a good career.

However, today is a momentous occasion, and before the game each member of Dan's squad will receive a well-deserved gift from Wolves, to reflect their hard work over the past two seasons.

It's the first time the women's team have played at Molineux since 2002, but the first of many ahead of us I'm sure, as we continue to provide a platform for them to push forward in everything they do.



Digital  
Printing



Large  
Format



Creative

[kazooprint.co.uk](http://kazooprint.co.uk)

**NEW**  
**Social Distancing Products**



[kazoostore.co.uk](http://kazoostore.co.uk)

[enquiries@kazooprint.co.uk](mailto:enquiries@kazooprint.co.uk) 01543 366 411

Unit 14 Cedars Business Centre, Avon Road, Cannock, Staffordshire WS11 1QJ





## WOLVES WOMEN

- 1 Shan Turner .....
- 2 Lyndsey GLOVER .....
- 3 Natalie WIDDAL .....
- 4 Anna PRICE .....
- 5 Emma CROSS .....
- 6 Alex BUCK .....
- 7 Tammi GEORGE .....
- 8 Shannie JENNINGS .....
- 9 Jade CROSS .....
- 10 Jamila PALMER .....
- 11 Jen ANSLOW .....
- 12 Kate EVANS .....
- 13 Bec THOMAS .....
- 14 Amy DICKEN .....
- 15 Kelly DARBY .....
- 16 Summer HOLMES .....
- 17 Katie JOHNSON .....
- 18 Anna MORPHET .....
- 19 Alisha MILLER .....
- 20 Lowri WALKER .....
- 21 Anna BEBB .....
- 22 Lucy GREEN .....
- 23 Pip WILSON .....
- 25 Nyah EDWARDS .....
- 27 Talitta CHASE .....
- 34 Safia PARAISO .....
- 36 Lauren RILEY .....
- 42 Orla CONLAN .....
- 45 Leonie JOYCE .....

Manager | Dan McNamara



## LINCOLN CITY WOMEN

- 1 Amy HALLORAN .....
- 2 Ashleigh HOUSLET-STOTT
- 3 Sophie CROSBY .....
- 4 Amy BLINKHORN .....
- 5 Amy KAY .....
- 6 Mary COOPER .....
- 8 Katy THORNLEY .....
- 9 Leah HARDY .....
- 10 Jess ROUSSEAU .....
- 11 Emily ATKINSON .....
- 12 Toni McHAMILTON .....
- 13 Sophie HUDSON .....
- 14 Lauryn WILCOCK .....
- 15 Jeorgia CARR .....
- 16 Daisy MARSH .....
- 17 Katie WILLIAMS .....
- 18 Ella TUPLIN .....
- 19 Olivia LESLIE .....
- 20 Beth SCARLL .....
- 21 Chloe GRAY .....
- 22 Ellie SCOTLAND .....
- 23 Alivia CHAMBERS .....
- 24 Rachael HOWES .....
- 25 Erin BELLABY .....
- 26 Ryley JOHNSON .....
- 27 Jodie STEADMAN .....
- 28 Betsy THOMAS .....
- 29 Taylor DEAN .....
- 30 Olivia MARROW .....
- 31 Leah MARKHAM .....
- 32 Iona LAWSON .....
- 33 Lana TIMSON .....
- 34 Maddi GREEN .....
- 35 Amelia SUMMERIL .....

Manager | Lee Mitchell

### OFFICIALS

Referee | Simon King  
Assistant Referee | Terry Addison  
Assistant Referee | Tony Lloyd

