





SPEND LESS
on your home energy bills



VISIT



COMPARE



SWITCH

Our simple and free Ofgem accredited service is available to all households.

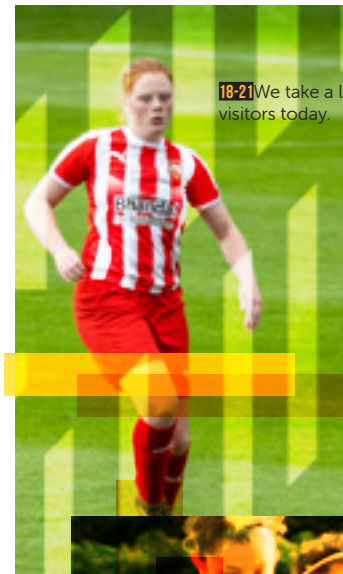


Average savings of £400* per year
energyangels.co.uk

*Refer to website for details



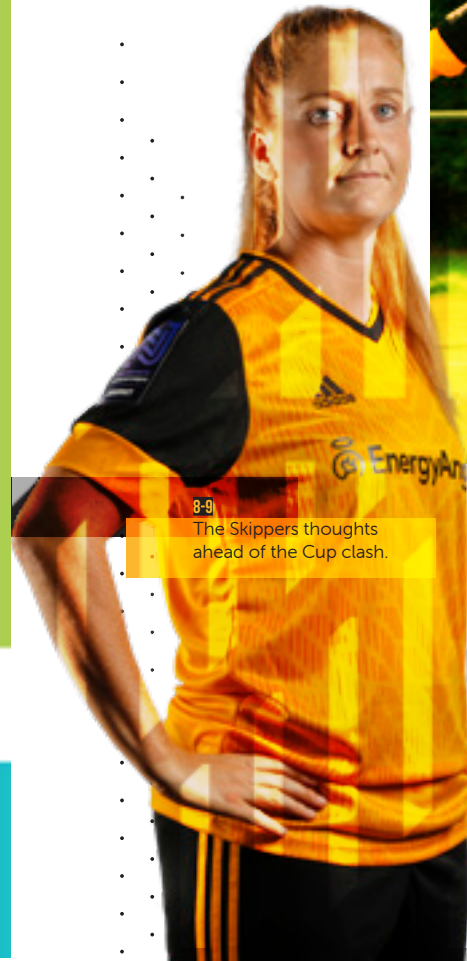
6-7
Macca's notes.



18-21 We take a look at our visitors today.



34-35 Action from the visit to Wem Town Ladies



8-9
The Skippers thoughts ahead of the Cup clash.

INSIDE

- 6-7 Macca
- 8-11 The Big Interview
- 12-13 New to the Women's Game?
- 14-15 Pack Profile
- 16-17 Pull-out Poster
- 18-21 Our Visitors
- 22-23 Reserves Update
- 25 All the stats
- 26 Khalsa Away
- 28 Burton Albion Home
- 30 Wem Town Away
- 32-33 Fixtures and Results
- 34 On this Day
- 36 Squads

PROGRAMME

Editor Mike Capewell
Assistant editor Simon Faulkner
Special thanks Jenny Wilkes, Tony Leighton.
Cover Simon Faulkner
Design Alchemy Creations alchemycreations.co.uk
Photography Simon Faulkner
Print Kazoo PSG
www.kazoostore.co.uk/

AWARDS

FAWNL | Programme of the season 2018/19
Soccer Club Swap Shop Awards |
Ladies National Runner Up 2019/20

OFFICIAL MATCHDAY PROGRAMME

Issue #3
Wolves Women vs Stourbridge Ladies



Sunday 13th December 2020
3pm kick off
Sir Jack Haywood Training Ground
Compton, Wolverhampton

HONOURS

- National Lge Div One North Champions 1993/94
- FAWPL MDiv One Midlands Champions 2016/17
- Midland Combination Champions 2011/12
- Midland Combination League Cup Winners 2011/12
- Birmingham County Cup Winners 1998/99, 1999/2000

THE CLUB

W&G Technical Director | Steve Cullis
W&G Club Manager | Andy Butler
First-team Manager | Dan McNamara
First-team Assistant Mngr | Jenna Burke-Martin
Reserve-team Manager | Sarah Lowden
Reserve-team Assistant Manager | TBC
First-Team Physios | Jenny Stretton & Paul Taylor
First-team Sports Scientist | Nathan Maxfield
Goalkeeping coach | Nick Hitchman
Fitness coach | Roy Williams
First-team Psychologist | Nick Hitchman
First-team coach | Marcus Webber
Opposition analysis / Set Piece Lead | Hugh MCluskie
Reserve-team coach | Tom Kalinowski

RTC U16 Head Coach | Tom Warren
RTC U16 Assistant Coach | Josh Darlington
Youth Development Phase Lead | Danny Heath
RTC U14 Head Coach | Greg Warren
RTC U14 Assistant Coach | Jamie Anderson
Foundation Phase Lead | Steve Millichamp
RTC U12 Head Coach | Tom Wellings
RTC U12 Assistant Coach | Lucy Jelf
RTC U10 Head Coach | Liam Turner
RTC U10 Assistant Coach | Scott Langford
RTC Goalkeeper Coach | Josh Uppal
RTC Physio | Dimitrios Tsimpolis
RTC Sports Science | Nathan Maxfield
RTC Support Coach | Charlotte Brown

CLUB COMMITTEE

Chair | Jenny Wilkes
Secretary | Brian Churm
Andy Butler, Steve Cullis, Pete Myatt,
James Orotayo, Simon Faulkner

VIDEOGRAPHY

Christos Makarounas

Wolves is an equal-opportunities employer who is committed to upholding the principles of equality, diversity and human rights.

Supporters are urged to report any incident immediately to the nearest steward. Doing so allows stewards to immediately deal with the situation. Any incident dealt with by a steward will automatically be logged and then detailed in the steward's report, which will then be passed to the Operations team.

Wolves takes very seriously its responsibility to protect children in its care. If you have any questions regarding child safeguarding at Wolves, please contact safeguarding officer Lisa Carter on 07833 051063.

The views in this programme are not necessarily the views of Wolves. Material in this programme is copyrighted and may only be reproduced with the written permission of Wolves. Wolves has made every effort to trace the copyright holders of all photographs used.

WELCOME TO WOLVES WOMEN

Top of the table clash at Castlecroft against Solihull Moors Women, saw Wolves score 8 and go to the top of the table.





MANAGER

DAN McNAMARA

Good afternoon,

Welcome to today's FA Cup First Round tie versus Stourbridge Ladies.

I am absolutely delighted to be back at Compton Park today after what has been a long eight months since the first lockdown came into place. The players are delighted to be back and we hope to continue our transition back into Compton Park full time over the coming months and start using the first class facilities once more. I'd like to thank Laura Nicholls, Rachel Hutchinson and Steve Cullis for making today happen. Their support for the women's and girls' section is and always has been first class.

Today sees our first competitive fixture since Long Eaton United back in October. The four week lockdown has been used well by all and last week's strong performance against a very good tier three outfit suggests the players are in a good place. The staff deserve huge credit for the effort put in to ensure the girls remained fit and ready throughout the past month.

Today we welcome a number of new faces into the group. After some strong performances within the reserves Lauren Riley and Saf Paraiso are in the squad. Both have impressed both Sarah and me in training and I am sure they'll be pushing for game time over the coming weeks.

The tie today will be a strong test against an organised Stourbridge team. After taking us close last season during the County Cup I am certain they'll be looking to cause an upset today. We must remain focused and approach the game with the same hunger and desire which has got us to where we are today.

The game promises to be different without our fans today. We hope for more good news on the next government review next week but we have received your messages of support and the girls are looking forward to welcoming you back ASAP.

For now, stay safe and follow the updates online.

Macca

#onepack



9



“It had been a very tough game. Watching from the bench in the first half, I thought we were the better team but we probably weren’t clinical enough.”

JADE CROSS

IT WAS LITTERALLY A GAME OF TWO HALVES

For Jade Cross in last season’s Birmingham County Cup quarter-final against today’s FA Cup opponents Stourbridge.

Cross spent the first 45 minutes of that January meeting sat on the substitutes’ bench – but she then turned super-sub at the start of the second period.

Just two minutes after entering the fray the prolific striker hit the net to bring Wolves level at 1-1, which remained the score until the final whistle.

That meant a penalty shoot-out, which Wolves won 4-2 to finally overcome battling opponents who had belied their status as members of the West Midlands League Division One South – two tiers below National League Wolves.

And Cross, reflecting on the game, admits: “It was one hundred per cent more relief than joy when Shannie Jennings scored the penalty that took us through.

“It had been a very tough game. Watching from the bench in the first half, I thought we were the better team but we probably weren’t clinical enough.

“Stourbridge were a bit open, but that was because they wanted to look for a goal themselves and they got one about ten minutes before half-time.

“When I went on at the start of the second half we needed to equalise as quickly as possible, and after we did that it was us that did most of the attacking.

“But fair play to Stourbridge, they defended really well and proved over the course of the game that they’re a better team than the League they’re in suggests.

“They’ve made an excellent start to this season and so I’m expecting another difficult match, but we’ve also had a great start and we’re feeling very confident.”

The Glass Girls have won all three of their league games to date, with a goal aggregate of 25-0, while coming through four qualifying rounds of the FA Cup.

Meanwhile Wolves also have a 100 per cent league record (goal aggregate 37-3) and have won their two FA Cup ties to reach today’s first round proper.

To date in the current campaign Cross has struck 11 goals, including one in each of the FA Cup victories over Sutton Coldfield Town (2-0) and, vitally, the second half winner in a hard earned 1-0 away win against Long Eaton in the last round.

“I’m happy enough with my own goal tally so far,” says Cross, “but more importantly we’re getting goals from a good number of players and if we can keep that up it will stand us in good stead for the rest of the season.

“It’s not been an easy season so far in terms of match preparation because of the problems that lockdown and being in Tier Three have caused us, but that’s been the same for every other team and so it’s been a case of just getting on with it.

“Our players have had individual training schedules and we’ve also been having one-to-one coaching sessions once a week with a member of staff, so we’ve kept up our fitness levels and now we just want to get back to playing regular football.

“We’ve now got another break from matches over Christmas, but we don’t intend easing off – we’re back in training on the 27th of December, hopefully with our first match after that an FA Cup second round tie on January the third.

“That will obviously depend on beating Stourbridge, and we know from last season that will be difficult – but we’ll be favourites again and this time we’ll be aiming to get the job done in 90 minutes rather than in a penalty shoot-out.”



Jade in action against Stourbridge in the Birmingham County Women’s Cup last season



Interview by Tony Leighton
Photos Simon Faulkner

NEW TO THE WOMEN'S GAME?



START HERE

If this is your first time watching Wolves Women in action, welcome!

Women's football is seeing a surge in interest, with increased media coverage, larger attendances at games, and the raised profiles of female footballers. Your support is what helps the game grow, and we can inspire a new generation.

Wolves Women currently sit in the fourth tier, which is equivalent to the men's League Two. Last season we had a comfortable lead at the top of the table, looking set for promotion, when the coronavirus pandemic hit and the season was null and voided. This season we are aiming to take that final step towards getting back into the Northern Premier Division.

There are 12 teams in our division, all fighting for the single promotion place.

Games are usually played at 2pm on Sunday afternoons, and it's a great place to bring the kids out to get behind the Wolves. Thank you for your support and we hope to see you again soon.



SO WHERE ARE WOLVES WOMEN IN THE LEAGUE?



TIMELINE

Summer 1975
Heathfield Rovers formed

Summer 1976
Heathfield Rovers become Wolverhampton & Wednesbury Tube

Summer 1982
Wolverhampton & Wednesbury Tube become simply Wolverhampton Ladies

September 1991
Wolverhampton Ladies join Women's National League Division One North (Tier 2)

May 1994
Wolverhampton Ladies win National League Division One North and promoted to Premier League National Division (Tier 1)

July 1994
Wolverhampton Ladies become Wolverhampton Wanderers Women

April 1996
Wolves Women relegated to Premier League Northern Division (Tier 2)

March 1999
Wolves Women win Birmingham County Cup

March 2000
Wolves Women retain Birmingham County Cup

May 2007
Wolves Women relegated to the Midland Women's Combination (Tier 3)

April 2012
Wolves Women win Midlands Combination League & Cup double and promotion to Premier League Northern Division (Tier 3)

April 2015
Wolves Women relegated to Women's Premier League Midlands Division One (Tier 4)

May 2017
Wolves Women win Women's Premier League Midlands Division One and promoted to Premier League Northern Division (Tier 3)

May 2018
Wolves Women relegated to Women's Premier League Midlands Division One (Tier 4)

March 2020
Wolves Women miss out on promotion to Premier League Northern Division (Tier 3) after null and voiding of the league due to COVID-19 with Wolves clear at the top of the table.

#13 BEC THOMAS GOALKEEPER

Having started playing football around seven years of age, Rebecca 'Becky' Thomas joined the youth ranks at Wolves, moving her way through to the second X1 as a 15 year-old.

A month short of her 16th birthday she sat on the bench for the first team, and a couple of months later made her first team debut, replacing Natalie Hall between the sticks in a County Cup victory over Darlaston Town.

The 2007/08 season saw her initially behind the experienced Hall for the start of the campaign, before eventually securing her first start, again in the County Cup, as she kept a clean sheet, and the final score line of 20-0 to Wolves suggests she wasn't over-taxed. As 2007 turned into 2008, Hall jumped ship and Becky took over as first choice. A permanent feature until the conclusion of the season, she managed four clean sheets in a Wolves team which finished fourth in the table.

With manager Dave Ball looking for a more experienced keeper for the 2008/09 term, Naomi Bruton returned to the club and Thomas was relegated to the Reserves, featuring only a couple

THE PACK PROFILES



BEC IN THE 2006/7 SEASON



WOLVES WOMEN CAREER STATISTICS

	League		WFA Cup		League Cup		B'ham CC		Total	
	apps	goals	apps	goals	apps	goals	apps	goals	apps	goals
2006-07							0 (1)	0	1	0
2007-08	12	0			2	0	3	0	17	0
2008-09	1	0	1	0					2	0
2009-10	19	0	1	0			4 (1)	0	25	0
2019-20	8	0	1	0	1	0			10	0
2020-21	6	0	1	0					6	0
Total	46	0	4	0	3	0	7 (2)	0	62	0

of times for the first team. The following term however, she was a near ever-present, missing just three games and helping Wolves to fifth place in the league and the final of the Birmingham County Cup.

The summer of 2010 saw Natalie Hall return to Wolves and Thomas, looking for regular first team football, took the opportunity to move across the Black Country to rivals Sporting Club Albion. The move paid off instantly for her as she helped Albion capture the Midland Combination title at the season's end, including a pair of league victories over Wolves.

Over the next six seasons she help West Bromwich Albion, as they were now called, establish themselves in the Northern Premier Division and to the brink of the Super League in 2016 as Albion captured the league title, but lost out to Brighton & Hove Albion in the end of sea-son play-off.

In the summer of 2017, after featuring over 150 time for the Baggies, she moved on to Nottingham Forest, where she remained for a couple of seasons before returning to Wolves last summer. Now a more experienced player, she has set about helping Wolves get back into the Northern Premier Division, an achievement she would almost certainly have attained last term but for the Covid epidemic.



WOLVERHAMPTON WANDERERS WOMEN 2020/21



Foundation



EnergyAngels



Introducing Stourbridge Ladies



FOUNDED: 2008 NICKNAME: THE GLASSGIRLS STADIUM: HINGLEY'S SPORTS GROUND, CRADLEY HEATH

Club History

Formed in 2008, Stourbridge FC Ladies began life in Division 2 of the Birmingham County Women's League. Having established themselves in the division, they then began to rise through the leagues under manager Andy Fisher. They captured their first trophy in 2013/14 when, after a season-long tussle with Coundon Court, they won the Division 2 title. That victory was by the slenderest of margins as the teams finished level on points with Stour's greater fire-power, 111 goals in 18 games, seeing them lift the title.

With both teams promoted the battle was continued the following term in Division 1. Again, at the season's conclusion, the pair were battling it out for the honours and this time it came to a straight shoot-out when, by a quirk of the fixture list, they met in the season's final fixture. This time it was Coundon Court who captured the title by a single point though both teams were again promoted.

The Glassgirls were now on a roll and settled well into the Premier Division of the league. Unable to chase down League Champions Tamworth, they did finish the term as runners-up and with it a third consecutive promotion. They were still able to capture honours this season when defeating Starland St Anne's in the Open Cup to capture their first knock-out trophy. The season also saw them compete in the WFA Cup for the first time with a victory over Leek CSOB being followed by a loss to higher division opposition in Burton Albion.

The 2016/17 season saw them enter the West Midlands Women's League in Division 1 South, achieving a very respectable mid-table finish. This was followed by a further two mid-table positions as they became an established team without really challenging for the top of the table. Last season was very similar until the Covid virus brought an early end to proceedings.

This season they started well, with victories in all three league fixtures prior to the latest lockdown, netting 25 goals and conceding none. They have fared even better in the FA Cup, having negotiated four ties to date, scoring 22 goals and beating higher league opposition twice which has seen them reach the First Round Proper for the first time in today's tie.



Stourbridge Ladies



We've met before

THE RECENT ENCOUNTER BETWEEN WOLVES WOMEN AND STOURBRIDGE LADIES



For all Wolves' attacking intent the Glassgirls soaked up wave upon wave of pressure but held out until full time.

With no extra time being played the game went straight to penalties. Price and Haynes netted for Wolves with Bown and Turvey levelling for Stourbridge before Palmer put her kick wide to give Stourbridge the advantage. Stourbridge, however, were unable to capitalise as Conod made an excellent save from Lawrence's kick and the scores remained tied. Bramford stepped up and netted before Howell shot wide leaving Shannie Jennings to fire Wolves into the semi-finals with a 4-2 shoot-out win.

Stourbridge

With Stourbridge being a relatively young club the meetings between today's combatants are limited. The teams have met only once before in a tight affair last season in the Birmingham County Cup.

The fixture took place at Castlecroft in January of this year and went all the way to penalties. Wolves had the better of the chances in the first half but it was the visitors who took the lead before the break. Dani Ranger found herself with space in the Wolves box and slotted home past debutant keeper Millie Conod.

Wolves manager Dan McNamara made a couple of changes at the break, bringing on Jade Cross, Jamila Palmer and Andrea Barnett to boost Wolves' attacking options and it made an instant impact. It was Jade Cross who netted Wolves' equaliser with her first touch of the game and try as they might, neither side was able to muster much more in the opposition box.



RESERVES

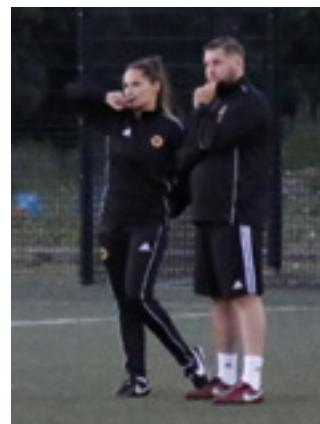


RESERVES MANAGER

Good afternoon all,

From the start of the season to this point the reserves have been producing excellent performances. We have competed and grown in strength each week which is credit to the players and their efforts to improve.

The best part of this journey is that we are now seeing opportunities open up for our younger players to get experiences in the first team, which is well deserved. We look forward to seeing those young faces in the squad today and hopefully many more match days to come.



Sarah Lowden

NEXT UP

Sheffield United Development

Sunday 20th December 2020 | 2pm
FAWNL Reserve Midlands

Latest Reserve Midlands League Table

	Pld	W	D	L	F - A	Pts	GD
Sheffield United	7	6	0	1	37 - 12	18	+25
Leicester City	6	5	0	1	42 - 8	15	+34
Stoke City	6	5	0	1	16 - 6	15	+10
Loughboro Foxes	6	4	0	2	33 - 11	12	+22
Wolves Women	5	4	0	1	28 - 7	12	+21
Lincoln City	7	3	0	4	22 - 21	9	+1
Nottingham For	6	3	0	3	19 - 20	9	-1
West Bromwich A	5	2	0	3	12 - 15	6	-3
Crewe Alexandra	5	2	0	3	11 - 21	6	-10
Sporting Khalsa	5	1	0	4	8 - 22	3	-14
Bedworth United	5	0	0	5	0 - 37	0	-37
Solihull Moors	7	0	0	7	7 - 55	0	-48

RESERVES FIXTURES

SEPTEMBER 2020

- 20 **WBA Res.** H L4-3
27 **L'boro Foxes Dev** H W5-1

OCTOBER 2020

- 11 **Sporting Kh' Dev** H W9-2
18 **Nttm Forest Res** A W9-0

NOVEMBER 2020

- 1 **Sheff Utd Dev** A W2-0

DECEMBER 2020

- 13 **Bedworth Utd** H 2pm
20 **Sheffield Utd Dev** H 2pm

JANUARY 2021

- 10 **Stoke City Res** A 2pm
17 **Solihull Moors DevA** 2pm
24 **Leicester City W Res A** 2pm

FEBRUARY 2021

- 7 **Lincoln City Dev** A 2pm
14 **L'boro Foxes Dev** A 2pm
21 **Crewe Alex' Res** A 2pm
28 **Sporting Kh' Dev** A 2pm

MARCH 2021

- 7 **Nttm Forest Res** H 2pm
28 **Bedworth Utd Dev A** 2pm

APRIL 2021

- 11 **Solihull M'rs Dev** H 2pm
18 **Stoke City Res** H 2pm
25 **Lincon Coty Res** H 2pm

MAY 2021

- 2 **Leicester City W Res H** 2pm
16 **WBA Res** A 2pm

TBACrewe Alex' Res H



**READY TO
CHALLENGE**

**ON THE ROAD
AWAY FROM OUR HOME
WE UNITE AS ONE PACK**

**SHOP NOW: IN STORE &
SHOP.WOLVES.CO.UK**



Latest Midlands Division 1 League Table

	Pld	W	D	L	F - A	Pts	GD
Wolves Women	6	6	0	0	37 - 3	18	+34
Doncaster Rov B	6	4	1	1	16 - 8	13	+8
Boldmere St Mike's	4	3	1	0	16 - 4	10	+12
Solihull Moors	5	3	1	1	19 - 10	10	+9
Lincoln City	5	3	1	1	17 - 8	10	+9
Long Eaton United	5	2	1	2	7 - 7	7	0
Sporting Khalsa	5	2	1	2	6 - 8	7	-2
Wem Town	4	1	1	2	4 - 10	4	-6
Holwell Sports	6	1	1	4	9 - 18	4	-9
Bedworth United	6	1	0	5	4 - 16	3	-12
Burton Albion	5	1	0	4	4 - 33	3	-29
Leafield Athletic	5	0	0	5	4 - 18	0	-14

Table correct as of 6/12/2020

RECENT RESULTS

1st NOVEMBER

Midlands Division One		
Bedworth United	P - P	Burton Albion
Vitality WFA Cup 3rd Qualifying Round		Lincoln City (Hardy 2)
Holwell Sports	0 - 2	Wolves Women (J Cross)
Long Eaton United	0 - 1	Boldmere St Michael's (Highway 2)
Redditch United (unknown)	1 - 2	Sporting Khalsa
Solihull Moors	3 - 0 (Jefferies 3)	Coventry Sphinx (Phillips, Simms, Matewe)
Wem Town (Davis, Jennings, Lewis, Morris)	4 - 3	

LEAGUE FIXTURES

13th DECEMBER

The Vitality Women's FA Cup 1st Round

Lincoln City
v
Solihull Moors

Wem Town
v
Boldmere St Michael's

Wolves Women
v
Stourbridge

FAWNL Midlands Division One

Bedworth United
v
Burton Albion

Long Eaton United
v
Leafield Athletic

Sporting Khalsa
v
Doncaster Rovers Belles

Wolves Women Player Stats 2020/2021

	League apps	goals	WFA Cup apps	goals	League Cup apps	goals	B'ham CC apps	goals	Wolves Total apps	goals
1	Millie Conod								3	0
2	Lyndsey Glover	4	2	1	0				21	7
3	Natalie Widdal	3 (1)	0	2	0				211	14
4	Anna Price	5	2	2	0				301	56
5	Emma Cross	6	0	2	0				158	3
6	Alex Buck								17	0
7	Tammi George	6	2	2	0				35	9
8	Shannie Jennings			0 (1)	0				26	4
9	Jade Cross	5 (1)	9	2	2				168	145
10	Jamila Palmer	1 (2)	2	2	0				89	55
11	Jen Anslow								230	47
12	Kate Evans	5 (1)	1	1 (1)	1				8	3
13	Bec Thomas	6	0	1	0				62	0
14	Amy Dicken								7	6
15	Kelly Darby	5	0	1	0				6	0
16	Summer Holmes								15	0
18	Anna Morphet	4 (2)	2	1 (1)	0				40	14
19	Alisha Miller	4 (1)	5	0 (1)	0				6	5
20	Lowri Walker	6	9	2	0				48	31
21	Eva Rogers	1 (3)	0						6	1
23	Pip Wilson	3 (1)	0	1 (1)	0				56	10
24	Anna Renken	1 (1)	1	0 (2)	0				4	1
25	Nyah Edwards	1 (2)	0	1 (1)	0				13	1
26	Talitta Chase	0 (1)	0						1	0
44	Lucy Gardner			1	0				39	0
42	Orla Conlon			0 (1)	0				1	0
36	Lauren Riley	0 (1)	2						1	2

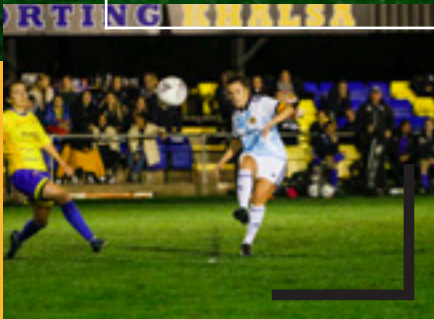
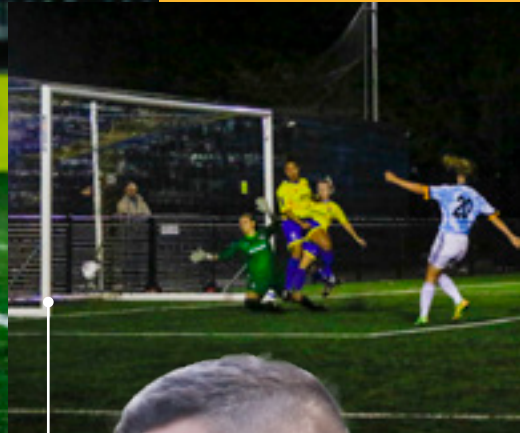
SPORTING KHALSA WOMEN 0 WOLVES WOMEN 5

Guardian Warehousing Arena, Willenhall | Wednesday 30th September
FAWNL Midlands Division 1 | Attendance : 150

Main pic: Lowri Walker jumps in celebration after opening the scoring.
Bottom: Kate Evans puts a ball forward in the first half in a Wolves attack.
Below: Walker's follow up after a blocked shot goes into the Khalsa goal.



LOWRI WALKER
6
GOALS IN 3 GAMES



DAN McNAMARA

"I thought we were hungrier and had more desire. Lowri Walker was unplayable for most of the game. She brings real quality on the pitch and is a great girl to work with."



GOALS LOG

- 5 mins - Lowri Walker
- 42 mins - Lowri Walker
- 69 mins - Lowri Walker
- 74 mins - Jade Cross
- 84 mins - Anna Morphet



Main pic: Jade Cross makes it 4 to Wolves after her long range effort hits the underside of the cross bar and hits the back of the net.

Inset top: The game started dry but heavy rain at half time and into the early part of the second half.

Inset bottom: Morphet hits a deflection and makes it 5-0.

WOLVES WOMEN 9

BURTON ALBION LADIES 0

CKW Stadium, Castlecroft, Wolverhampton | Sunday 4th October
FAWNL Midlands Division 1 | Attendance : 100

Wolves		Burton
19	SHOTS ON	0
22	SHOTS OFF	0
15	CORNER	0
8	OFFSIDE	0
3	FREEKICK	5

GOALS LOG

17 mins - Tammi George
21 mins - Jade Cross
23 mins - Jade Cross
27 mins - Jade Cross
41 mins - Jade Cross
50 mins - Lowri Walker
55 mins - Alisha Miller
72 mins - Lauren Riley
77 mins - Lauren Riley



Above: Tammi George heads home to open the scoring on 17 minutes.

Main pic: Tammi George puts in a battling midfield performance.
Bottom: Tammi runs to celebrate with Anna Morphet who took the corner for the assist for the opening goal.
Below: Eva Rogers in the thick of the action.



LAUREN RILEY

"Absolutely ecstatic to get the opportunity to play with Wolves Women in the National League. It was an incredible experience which I really enjoyed, even more so managing to score two goals. Wolves Women are such a welcoming team and I just want to thank them and my coaches for all the support. This wouldn't be possible without them so thank you."



Main pic: Ali Miller makes it 7-0 to Wolves after coolly slotting the ball past Langstone in the Burton goal.
Inset top: In her debut for Wolves Women, Lauren Riley scores in the 72nd minute to make it 8-0.
Inset bottom: Congratulation for Riley from captain Kelly Darby, Nyah Edwards and Anna Morphet.

DEBUT
GOAL
FOR LAUREN
RILEY



Main pic: Anna Price's precision header finds the back of the Wem net to put Wolves in front.

Bottom: Wolves Chairman Jeff Shi meets manager Dan McNamara before kick off.

Below: The team congratulate Lowri Walker after putting the score at 3-0 just before half time.



ANNA PRICE
FIRST
GOAL OF THE
20/21 SEASON



DAN McNAMARA

"We hardly gave them anything throughout, this was the really pleasing thing. We are limiting teams to hardly anything. It is a testament to the girls, we have now kept four clean sheets from five, it is really pleasing."



WEM TOWN LADIES 0
WOLVES WOMEN 6

Wem Town FC | Sunday 11th October
FAWNL Midlands Division 1 | Attendance : 100

Wem		Wolves
1	SHOTS ON	15
1	SHOTS OFF	10
2	CORNER	10
0	OFFSIDE	5
10	FREEKICK	9

GOALS LOG

- 2 mins - Anna Price
- 4 mins - Alisha Miller
- 44 mins - Lowri Walker
- 63 mins - Jade Cross
- 65 mins - Jade Cross
- 75 mins - Jade Cross (penalty)



Main pic: Jade Cross makes it 6 to Wolves after her perfectly placed penalty beats Wem 'keeper Sarah Parkes
Inset top: Lowri Walker 'megs a Wem midfielder on another Wolves attack.
Inset bottom: The team congratulate Jade Cross on the completion of her hat-trick.



FIXTURES
RESULTS
LINE-UPS

FAWNL
Vitality WFA Cup
FAWNL Cup

Red - 1st sub
Green - 2nd sub
Blue - 3rd sub
Pink - 4th sub
Gold - 5th sub

Bold fixture - Home fixture
Bold player - Scorer
● - Goal scored
○ - Penalty scored
+ - Own goal
! - Yellow card
■ - Red card

RES POS ATT

SEPTEMBER

20	Leaffield Athletic	6-0	2	127
27	Solihull Moors	8-1	1	0
30	Sporting Khalsa	5-0	1	150

OCTOBER

4	Burton Albion	9-0	1	100
11	Wern Town	6-0	1	131
18	Sutton C'field Tn (WFAC2Q)	2-0	-	201
25	Lincoln City	3-2	1	40

NOVEMBER

1	Long Eaton United (WFAC3Q)	1-0	-	-
---	----------------------------	-----	---	---

DECEMBER

13	Stourbridge (WFACR1)	3pm	-	-
20	Bedworth United	2pm	-	-

JANUARY

10	Long Eaton United	2pm	-	-
17	Doncaster Rovers Belles	2pm	-	-
24	Boldmere St. M	2pm	-	-
27	Sporting Khalsa	7.45pm	-	-
31	Holwell Sports	2pm	-	-

FEBRUARY

7	Leaffield Athletic	2pm	-	-
14	Solihull Moors	2pm	-	-
21	Burton Albion	2pm	-	-
28	Wern Town	2pm	-	-

MARCH

7	Lincoln City	2pm	-	-
14	Long Eaton United	2pm	-	-
21	Boldmere St. M	2pm	-	-
28	Bedworth United	2pm	-	-

APRIL

11	Doncaster Rovers Belles	2pm	-	-
18	Holwell Sports	2pm	-	-

SUBSTITUTES

REF

Thomas	Dwarby	E.Cross	Morphet ●	Price	Glover	George ●	Walker ●●	Palmer ●	Renken ●	Wilson	J.Cross	Evans	Rogers	Widdal	Edwards	M.Shutt				
Thomas	Darby	E.Cross	Widdal	Price	Glover ●●	George	Walker ●	Miller ●●	J.Cross ●	Evans ●	Morphet ●	Rogers	Wilson	Renken	Edwards	J.Griffiths				
Thomas	Darby	E.Cross	Widdal	Price	Glover	George	Walker ●●●	Wilson	J.Cross ●	Evans	Morphet ●	Rogers	Miller	Renken	Edwards	G.Thrower				
Thomas	Darby	E.Cross	Morphet	Edwards	Rogers	George ●	Walker ●	Wilson	J.Cross ●●●●	Miller ●	Wilson	Widdal	Glover	Price	Riley ●●	L.Mountain				
Thomas	Widdal	E.Cross	Morphet	Price ●	Glover	George	Walker ●	Miller ●	J.Cross ●●●	Evans	Chase	Palmer	Edwards	Rogers	Renken	L.Reddin				
Thomas	Widdal	E.Cross	Morphet	Price	Glover	George	Walker ●	Palmer	J.Cross ●	Evans ●	Conlan	Jennings	Wilson	Rogers	Chase	Edwards	Miller	Renken	Gardner	J.Stenson
Thomas	Darby	E.Cross	Morphet	Price ●	Wilson	George	Walker ●	Miller	J.Cross	Evans	Widdal	Jennings	Renken	Palmer ●	Gardner	A.Barber				
Gardner	Darby	E.Cross	Widdal	Price	Wilson	George	Walker	Palmer	J.Cross ●	Edwards	Evans	Miller	Morphet	Renken	Conlon	Thomas	O.Thornhill			

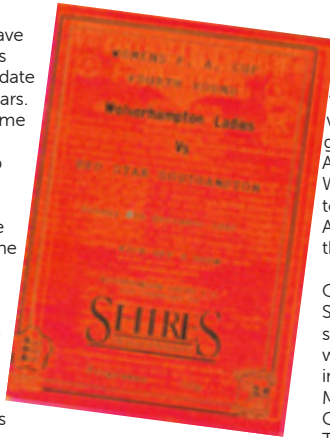


ON THIS DAY

13TH DECEMBER

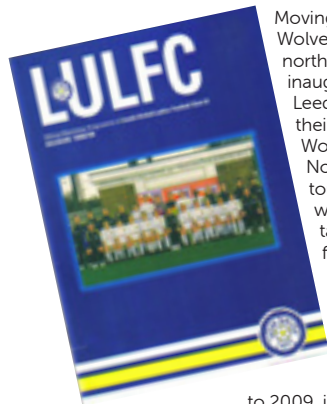
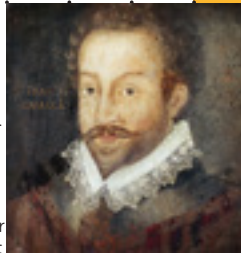


Wolves Women have featured four times previously on this date over the last 28 years. The first outing came in a Fourth Round tie in the WFA Cup against top-flight team Red Star Southampton. The Saints had made the final the previous year, losing to a Doncaster Belles side which included current and former England Internationals Sue Buckett, Pat Davies and Pat Connolly.



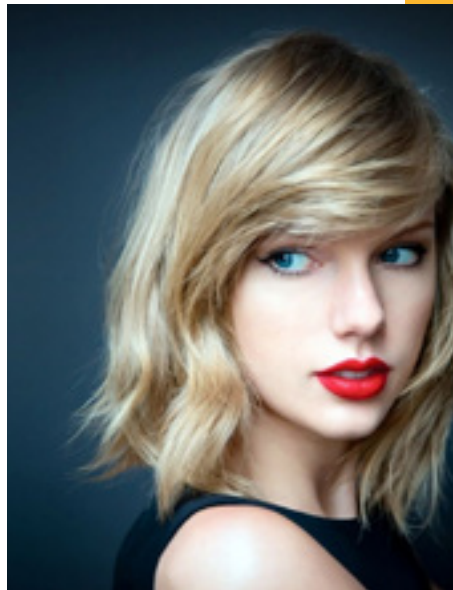
The last time Wolves featured on this date was in 2015 against Rotherham United at Keys Park, Hednesford in a Midlands Division One fixture. The visitors were the first to strike in only the fifth minute when Pargin slotted past Lucy Gardner in the Wolves goal. The home team were level before the break as Amber Quick netted from a corner. Hattie James gave Wolves the lead early in the second half, only for Shaw to draw The Millers level. Wolves responded well and Amber Quick notched her second of the game late in the game as Wolves triumphed 3-2.

Out in the wide world Sir Francis Drake set sail on his round the world trip on this day in 1577, whilst in 1974 Malta became a republic. Captain Von Trapp in The Sound of Music alias Christopher Plummer was born in 1929, with singer--songwriter Taylor Swift celebrating her 31st birthday today.



Moving forward six years, Wolves made the trip north to Tadcaster for an inaugural meeting with Leeds United who were in their first season in the FA Women's Premier League Northern Division. A tough game ensued with the home team taking the lead in the first half and Hayley Everiss notching Wolves' equaliser as the points were shared.

Jumping forward to 2009, it was a Midland Combination clash with Leicester City Ladies at Goodrich Sports Ground. City arrived in Wolverhampton as a struggling team and it didn't take Wanderers long to notch up the opening goal, with Amber Quick netting just after the quarter-hour mark. The score remained 1-0 at the break with Amy McCann doubling the lead on the hour with a penalty. Dani Selmes quickly added a third and the game was over as a contest at 3-0 with the visitors dropping back in an effort to stop Wolves scoring. City held out until added time when McCann scored her second and Wolves ran out 4-0 winners.



Digital Printing



Large Format



Creative

kazooprint.co.uk

NEW Social Distancing Products



kazoostore.co.uk

enquiries@kazooprint.co.uk 01543 366 411

Unit 14 Cedars Business Centre, Avon Road, Cannock, Staffordshire WS11 1QJ



WOLVES WOMEN

- 1 Millie CONOD.....□
- 2 Lyndsey GLOVER.....□
- 3 Natalie WIDDAL.....□
- 4 Anna PRICE.....□
- 5 Emma CROSS.....□
- 6 Alex BUCK.....□
- 7 Tammi GEORGE.....□
- 8 Shannie JENNINGS.....□
- 9 Jade CROSS.....□
- 10 Jamila PALMER.....□
- 11 Jen ANSLOW.....□
- 12 Kate EVANS.....□
- 13 Bec THOMAS.....□
- 14 Amy DICKEN.....□
- 15 Kelly DARBY.....□
- 16 Summer HOLMES.....□
- 17 Katie JOHNSON.....□
- 18 Anna MORPHET.....□
- 19 Alisha MILLER.....□
- 20 Lowri WALKER.....□
- 22 Lucy GREEN.....□
- 23 Pip WILSON.....□
- 25 Nyah EDWARDS.....□
- 42 Orla CONLAN.....□
- 44 Lucy GARDNER.....□

Manager | Dan McNamara

OFFICIALS

Referee | Jordan Griffiths
 Assistant Referee | Kevin Dabbs
 Assistant Referee | Thomas Nicklin



STOURBRIDGE LADIES

- Carly ALDRED.....□
- Keren ALLEN.....□
- Jess BATE.....□
- Lili-Beth BOWN.....□
- Louisa BUTCHER.....□
- Phillipa BUTCHER.....□
- Nuala COLEMAN.....□
- Lucy HEASELGRAVE.....□
- Sophie HEASELGRAVE.....□
- Leila HOPKINS.....□
- Sarah KENNEDY.....□
- Amber LAWRENCE.....□
- Ruby MEESON.....□
- Esme MORAN.....□
- Courtney MURPHY.....□
- Alex NICKLIN.....□
- Amy PLIMMER.....□
- Abigail PRESTON.....□
- Amie PRESTON.....□
- Dani RANGER.....□
- Hollie SOMERS.....□
- Mollie-Mai SUMMERS.....□
- Georgia THACKER.....□
- Macey TURVEY.....□

Manager | Andy Fisher

NEXT AT HOME

Bedworth United Ladies

Sunday 20th December 2020 | 2pm
 FAWNL Division One Midlands

